

STATE AID PUBLIC CONSULTATION – CLOSURE REPORT



2nd December 2016

SUPERFAST SOUTH GLOUCESTERSHIRE

New Procurement to further extend coverage of NGA Broadband across South Gloucestershire

STATE AID PUBLIC CONSULTATION – CLOSURE REPORT

1. Outcome of the Public Consultation

The Public Consultation to determine the State Aid classifications for the Superfast South Gloucestershire project closed on Monday 7 November 2016. The Public Consultation followed an Open Market Review (OMR) with the telecoms market to which 2 commercial providers responded with information on their commercial plans in the county. During the Consultation period South Gloucestershire Council received responses from 2 commercial providers and information about the broadband service experienced from both individual residents and collectively from communities.

Following this process, the eligible Intervention Area for the project was determined; the 'White' areas. The final State Aid maps for Next Generation Access (NGA) Broadband and Basic Broadband are shown below.

South Gloucestershire Council intends to launch a public procurement to secure NGA network solutions to serve premises within the Intervention Area.

2. Timescales

The following table summarises the timescales of the next stages of the procurement:

Activity Date	
Consultation period for the State Aid Public Consultation	7 October 2016 to 7 November 2016
Expected start of procurement	13 December 2016
Award NGA broadband contract	15 May 2017

STATE AID PUBLIC CONSULTATION – CLOSURE REPORT

3. Revised State Aid Maps

The following criteria have been used by South Gloucestershire Council to determine the classification of areas into Basic Broadband and NGA White/Grey/Black areas respectively:

For basic broadband,

- A postcode is turned grey if there is only one broadband infrastructure operator providing basic broadband services (with speeds greater than 2 Mbps) to that postcode.
- A postcode is turned black if there are at least two broadband infrastructure operators providing basic broadband services (with speeds greater than 2Mbps) to that postcode.
- All other postcodes remain white.

For NGA,

- A postcode is turned grey if there is only one broadband infrastructure operator providing NGA services (supporting minimum speeds of at least 30Mbps) to that postcode.
- A postcode is turned black if there are at least two broadband infrastructure operators providing NGA services (supporting minimum speeds of at least 30Mbps) to that postcode.
- All other postcodes remain white.

In addition, the proposed Intervention Area includes a number of “under review” areas (coloured blue on the map). These areas have previously been indicated to have planned commercial coverage for NGA broadband (i.e. mapped as NGA grey), but those plans have been reported through the OMR (or 2014 OMR in the absence of a new operator response) as being ‘at risk’ of not being completed. These areas will be subject to continued monitoring and verification of operator plans by the Council within the 3 year period and in the event that these commercial plans fall away, these premises will be mapped as NGA white and form part of the eligible Intervention Area via this aid measure.

The mapping analysis of existing and concretely planned coverage (within the next 3 years) has identified significant remaining ‘white NGA’ areas. The outcome of the Public Consultation is summarised below in terms of NGA White, Grey, Black and “under review” premises in NGA White, Grey, Black and “under review” postcodes.

	Number of Postcodes	Number of Black premises	Number of Grey Premises	Number of White Premises
Black Postcodes	2,291	42,975	0	0
Grey Postcodes	3,010	0	58,178	0
‘Under Review’ Postcode	569	0	7,012	5,012
White Postcodes	836	0	4,765	6,454

STATE AID PUBLIC CONSULTATION – CLOSURE REPORT

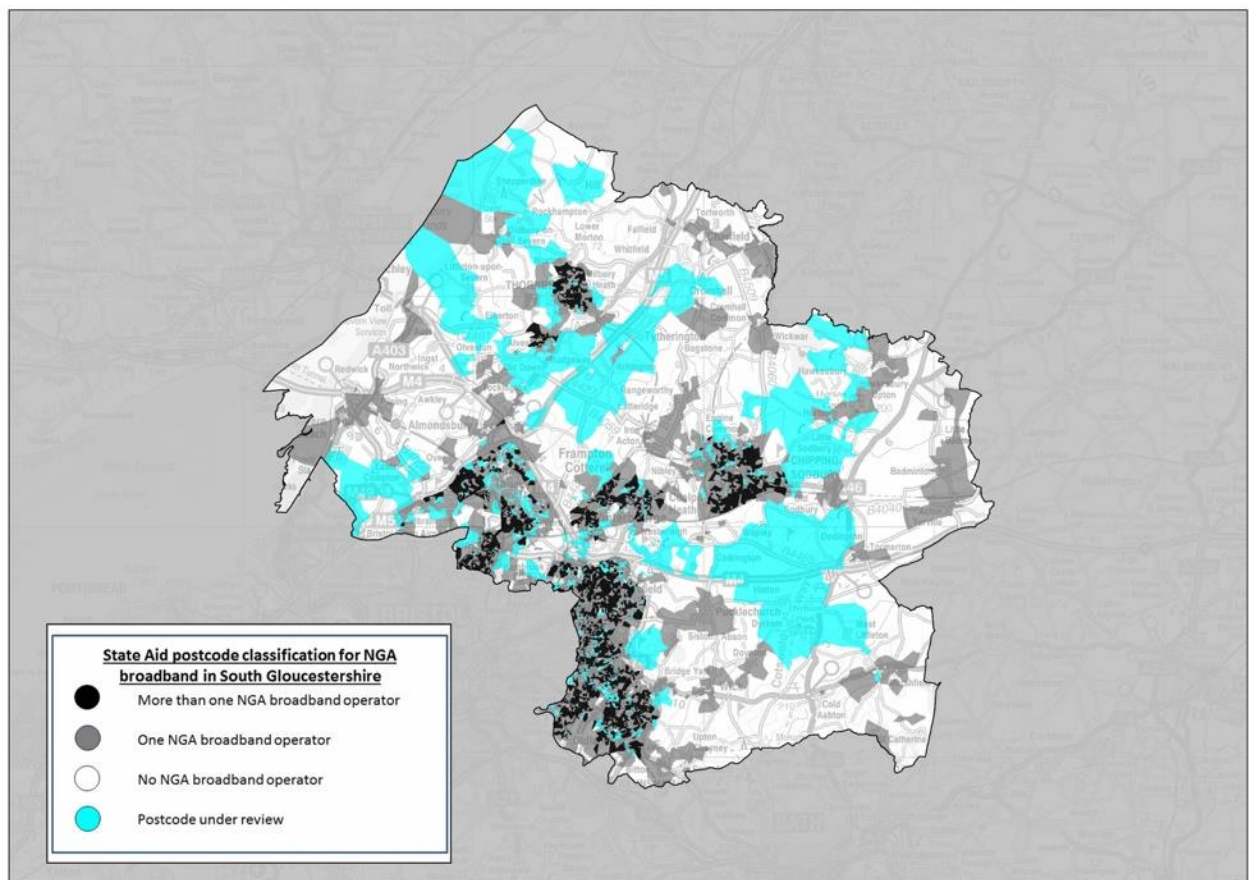
The South Gloucestershire Council (Superfast South Gloucestershire) Intervention Area includes 6,454 NGA White premises spread over 836 NGA White postcodes, but could include up to an additional 5,012 “Under Review” premises, creating a total of 11,466 premises if the “Under Review” premises become White in scope.

The following table summarises the outcome of the Open Market Review in terms of White, Grey and Black postcodes and premises for Basic Broadband:

	Number of Postcodes	Number of Black premises	Number of Grey Premises	Number of White Premises
Black postcodes	2,291	42,975	0	0
Grey postcodes	4,415	0	81,421	0
White postcodes	0	0	0	0

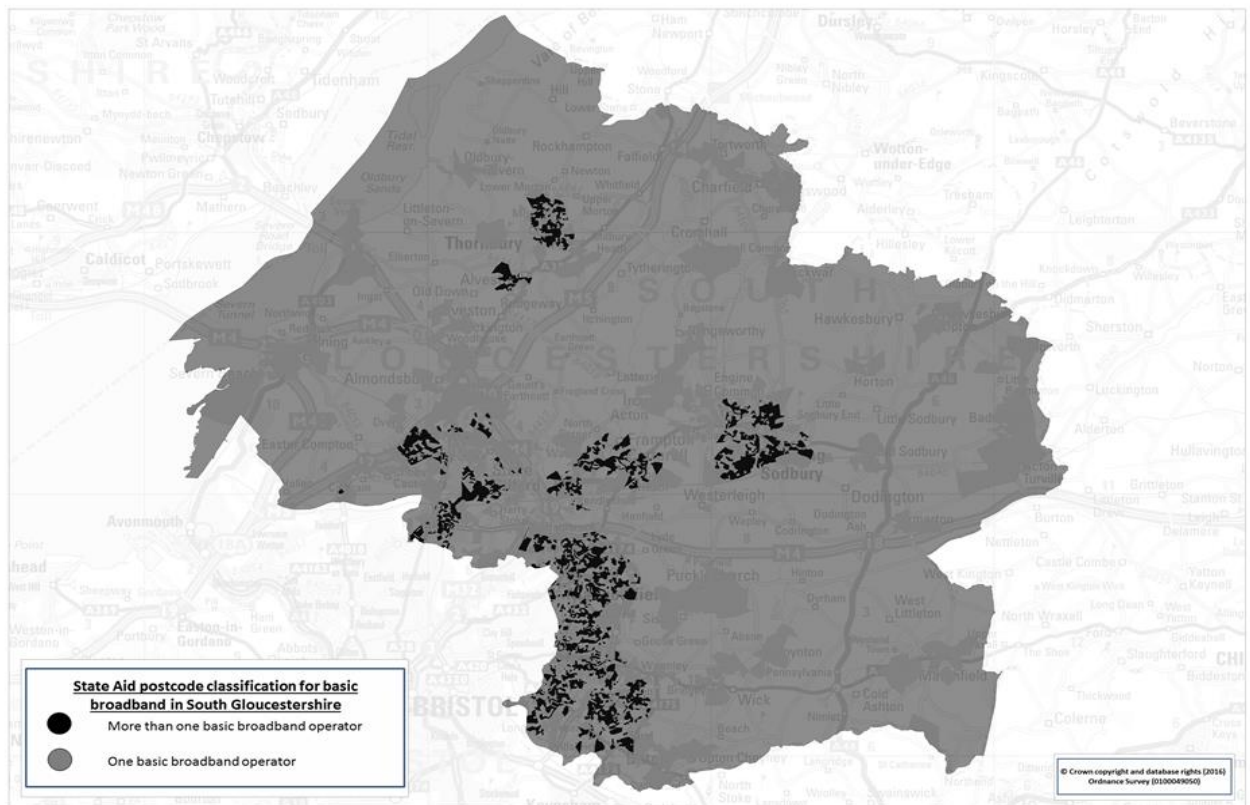
4. State Aid Maps

The State Aid maps for the Intervention Area are shown below for NGA Broadband and Basic Broadband respectively:



Basic Broadband respectively:

STATE AID PUBLIC CONSULTATION – CLOSURE REPORT



5. Status of Intervention Area

The State Aid Public Consultation is now closed. South Gloucestershire Council has sought assurance from the National Competence Centre (part of the Department for Culture Media and Sport) which oversees the UK National Broadband Scheme on the proposed Intervention Area. Following successful assurance, the Intervention Areas mapped above will be confirmed as eligible for public sector intervention for the next stage of the South Gloucestershire Council (Superfast South Gloucestershire) broadband project, including the forthcoming procurement.

The confirmed new Intervention Area will be published on the project website following clearance by the National Competence Centre.

6. Contact Details

If you have any comments or questions regarding the project, you can get in touch with South Gloucestershire Council's (Superfast South Gloucestershire) NGA Broadband Project Team by email at: broadband@southglos.gov.uk.

Up-to-date information about the Superfast South Gloucestershire project can be found at: <http://www.southglos.gov.uk/community-and-living/broadband/>.