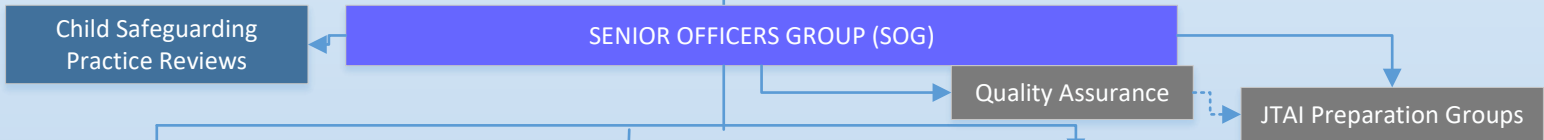




# South Gloucestershire Children's Partnership Executive

Three Statutory Partners - Meets four times a year



Independent Scrutiny

**Best Start for children with complex needs**

LEAD: ICB  
Admin: ICB

SEND  
LD, 0-25 and Complex Needs including some children in care

Pathways including transition to adulthood

**Best Start for Vulnerable Children**

LEAD: Police  
Admin: Police

Multi Agency Operational Management of:

- ✓ MASH
- ✓ MARAC
- ✓ Front Door
- ✓ Secure Estate

Exploitation Audit Group

**Best Start in Life**

LEAD: LA  
Admin: LA

Children and Young People's plan/overall strategy

Trigger Trio

Early Years, Schools, Post 16, EHE

Early Help/ Preventative Services

JTAI Preparation Groups

Stakeholder Network

