



ANNUAL REPORT 2023-24



INTRODUCTION

The South Gloucestershire Safeguarding Adults Board's (SGSAB) Annual Report is designed to give an overview of multi-agency work across South Gloucestershire.

In line with best practice this annual report and will be shared with:

- The Director of People, South Gloucestershire Council
- The Director of Adult Social Services
- The Chief Executive of South Gloucestershire Council
- The Police and Crime Commissioner
- The Children, Adults and Health Cabinet
- The Health and Wellbeing Board
- The Safer and Stronger Communities Strategic Partnership
- The South Gloucestershire Children's Partnership

This report has been authored by Sarah Taylor, Business Manager.

The report was approved by the Safeguarding Adults Board on 9th October 2024 and published on the SGSAB website on 17th October 2024

Should you require the report in any other format to support accessibility please contact [Sarah Taylor](#)

MESSAGE FROM OUR INDEPENDENT CHAIR



Welcome to the South Gloucestershire Safeguarding Adults (SAB) Annual Report 2023 – 2024, the publication of which is one of the main statutory responsibilities of the SAB.

The report evidences the commitment to safeguarding the most vulnerable adults at risk of abuse or neglect in our communities.

The impact of the pandemic coupled with the cost of living, continues to challenge all our partners. The “Safeguarding Activity” section within this report shows increases in the number of safeguarding concerns, acts of neglect and omission, financial abuse and domestic abuse.

An important part of the SAB’s role is to seek assurance from partners that local safeguarding arrangements are managed effectively. Despite the increases in demand, acknowledging that there are always areas for improvement, I am confident that that is the case.

A significant amount of this work is carried out by members of the SAB’s five subgroups. Readers may note that since last year, we have a new subgroup – our ‘Lived Experience’ group. This subgroup will ensure that SAB members ‘hear the voice of service users’ which will enable us, where relevant, to learn and cultivate change within all our organisations.

I would like to thank all SAB partners, statutory, community based and the voluntary sector for their contributions to the work of the Board and its subgroups which enable us to develop and deliver our priorities as identified in our business plan.

Without their collective dedication to this work, the Board would be unable to function.

Tony Oliver, Independent Chair

ABOUT THE BOARD

Safeguarding Adults Board have three main duties

- Develop and publish a strategic plan setting out how they will meet their objectives and how their member and partner agencies will contribute
- Publish an annual report detailing how effective their work has been
- Commission safeguarding adults reviews (SARs) for any cases which meet the criteria for these.

The board has an independent chair, Tony Oliver. The board structure consists of quarterly full board meetings, quarterly meeting of a performance monitoring and subgroup chairs group and five permanent subgroups, for this reporting period, all of these meetings have taken place virtually. This has worked well, and attendance has remained good. The subgroups are:

- Learning and Development
- Safeguarding Adults Review
- Quality Assurance
- Policy and Procedure
- Lived Experience

SAFEGUARDING ACTIVITY



4438 Safeguarding Concerns



1226 Section 42 Enquires



54 other safeguarding enquiries



37.5% of enquiries are about Neglect & Acts of Omission



53% of enquiries are about a person in their own home



18.6% of enquiries are about financial abuse

Safeguarding Adults in South Gloucestershire



14.6% of enquiries are about physical abuse



12% of safeguarding concerns are for people with a Learning Disability



16% of enquiries are about Domestic Abuse



1 Safeguarding Adults Review



35.5% of enquiries have physical support as the primary support reason



4% of enquiries are related to sexual abuse



91% of cases have a decision made within 7 days
67% on the first day

THE WORK OF THE BOARD

Much of the work of the board takes place in the sub groups which are well represented by multi-agency partners. The chairs of the groups meet together quarterly and all of them provide reports to the full board meetings each quarter.



Policy and Procedure Sub Group

This subgroup focusses on the revision and creation of policy, procedure and practice guidance to support professionals from all organisations working with adults in South Gloucestershire. This year has been especially busy and the following have been published/updated. Click the icons to access the full documents.



Click the icon for the revised Resolution of Professional Differences Policy



Click the icon for the new Regional Safeguarding Adults Procedures



Click the icon for the new Mental Health & Suicide Prevention Guidance



Click the icon for the revised Organisational Abuse Guidance



Click the icon for the revised Exploitation Guidance



Click the icon for the revised Professional Curiosity Guidance

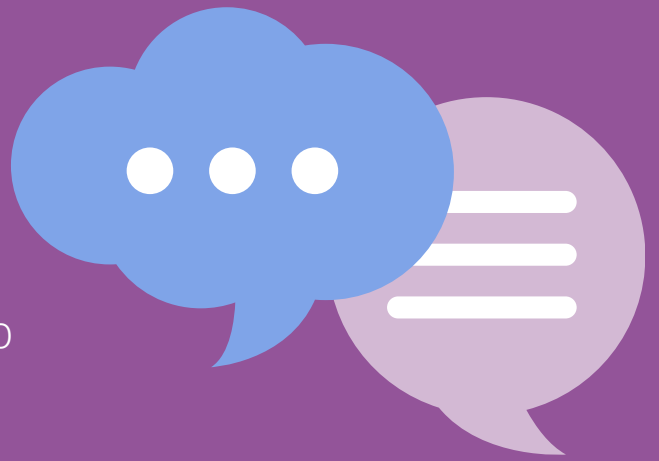


Click the icon for the revised Safer Recruitment Guidance

All of the multi agency Policies, procedures and guidance documents can be found [on this page of the website](#)

Lived Experience

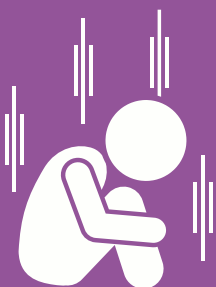
This subgroup is a joint group with the Children's Partnership and is brand new. The focus of this group is to hear the voices of adults and use these to develop the work of the SAB and its partners .



The group was established during this year and terms of reference agreed. Hearing the voice of adults has been a priority for the board for several years and it has been an area that has not developed well or quickly enough. The group has representation from a number of key organisations working in South Gloucestershire and the representatives have access to different focus groups. The sub group considers priority themes which are then discussed by each focus group and then the feedback is collated and shared with the SAB. The first piece of work is focussed on domestic abuse and violence against women and girls and will be reported into the Dec 2024 SAB

Quality Assurance

The QA sub group meets every quarter and undertakes a multi agency audit on a theme. Read the audits by clicking the icons below:



Click the icon to
read the
Neglect Audit



Click the icon to
read the
Domestic Abuse
& Dementia
Audit



Click the icon to
read the
Exploitation
Audit



Click the icon to
read the
Self Neglect
Audit

SAFEGUARDING ADULTS REVIEWS



During the year 2022-23 the SAR sub group received three referrals for potential SARs.

None of these met the criteria for a SAR.

One SAR that was already underway was published during this year.

SAR Adult K was published in January 2024. Adult K was a young woman who died in London.

Organisations in Westminster took part in the review.

You can read the 'Adult K' SAR Learning below:



Click the icon to read
Adult K SAR



Click the icon to read
the learning brief
for Adult K

Understanding the Impact of SARS

Following the publication of [Mr D SAR](#), in Oct 2022, we provided Bitesize Learning sessions about Self Neglect. Feedback shows the following responses when asked about key messages to take away.



In June 2023 the SAB also undertook a 'one year on' learning exercise to understand how learning had been embedded. Ten organisations took part. 70% told us they promote the Bitesize sessions, and 305 record attendance on their own systems. Some of the organisations have provided their own training sessions or have included more about self neglect into existing training and others mentioned attending the self neglect workshop during Stop Adult Abuse week.

Half of the organisations who responded share newsletters and audit briefing to keep staff up to date about self neglect.



4

Organisations include self neglect in regular team meetings

5

Organisations shared audits and briefings on this theme

RELATED THEMES

Organisations told us they are including new sessions about confidence in chairing meetings



CLUTTER RATING

1

Only one organisation mentioned using the clutter rating tool. There needs to be increased promotion of this tool



8 OUT OF 10

Have included additional training



SUMMARY

What are organisations doing to promote understanding of Self Neglect?

The organisations were also asked about their use of the multi agency self neglect guidance.

All organisations were aware of this and make reference to it with practitioners. Evidence of use was more difficult to measure to there is evidence of practitioners being referred to use the guidance.

Organisations gave specific examples of the impact of the SAR on practice including:

Roll out and use of the clutter rating tool to all staff

single agency thematic data shows that staff are considering self-neglect

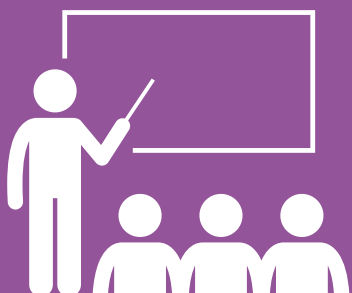
Identification of self-neglect in a housing scheme following increased training about this SAR

LEARNING AND DEVELOPMENT

The SAB offers a comprehensive multi agency safeguarding training offer, although much of this continues to be delivered online. Overall attendance rate is 78% which is a fall of 3% for the previous year. Although this had risen to 85.5% in quarter 4.



In addition to the multi agency programme this year there was a learning event for all partners following publication of Adult K SAR. This was attended by 50 professionals from a variety of organisations across South Glos.



**176 delegates
attended
'Raising
Safeguarding
Concerns'**

Attendance at Raising Safeguarding Concerns has reduced by 46% this year. This will need to be monitored and explored by the Learning and Development sub group.

100% of respondents said they would recommend the Domestic Abuse training to others in their organisation

A new Domestic Abuse course was launched this year and is a joint course with the children's partnership. Quality assurance of this includes evaluation data and direct observation of the course by members of the L&D sub group.

16 individuals from 13 Provider organisations are part of the Trained Trainer network delivering the Raising Safeguarding Concerns course to their own staff, they have trained 146 people in this period.

People in Positions of Trust (PIPOT)

There were 16 allegations received about Adults in a Position of Trust in 2023-24. 6 of these were substantiated, 8 inconclusive and 2 unsubstantiated.

These included alcohol misuse while at work, stalking, sexual misconduct and child protection concerns. The individuals were from a range of job roles across agencies.

Budget Information

South Gloucestershire Safeguarding Adults Board 2023-24	
Source of Funds	
Police and Crime Commissioner	£ 6,471.36
People Department South Gloucestershire Council	£ 59,971.84
Sub Total	£ 66,443.20
Total Income	£ 66,443.20
Application of Funds 2023-24	
Pay	
0.5 Business Manager Post (<i>incl.on costs</i>)	£ 37,993.39
Independent Chair	£ 16,108.41
Sub-Total	£ 54,101.80
Scrutiny and Reviews	
Safeguarding Adults Review	£ 6,500.00
Project Funding	£ 7,875.00
Sub-Total	£ 14,375.00
Training and Development	
Board conference expenses	£ 831.00
Multi Agency Training <i>not calculated as separate budget -will be included in future</i>	
Sub-Total	£ 831.00
Additional costs	
Travel Expenses	£ 9.19
Total Expenditure	£ 69,316.99
Overspend	-£ 2,873.79



IF YOU ARE WORRIED ABOUT AN ADULT CONTACT OUR SAFEGUARDING TEAM:

Monday – Friday 9am-5pm 01454 868007

Out of hours and at weekends 01454 615165

If you are deaf or hard of hearing text 'EDT' followed by your name and message to 60066



IF YOU ARE LOOKING FOR SAFEGUARDING TRAINING:

The information about the multi agency training offer is [here](#)



IF YOU WOULD LIKE TO READ OUR SAFEGUARDING ADULTS BOARD NEWSLETTERS:

The newsletters are published [here](#)



Scan the QR code to visit the SAB
website [here](#)