



South Gloucestershire

Safeguarding Children Board

Annual report

2017-2018



Foreword from Independent Chair – Amy Weir

There is a strong commitment towards safeguarding from all of those working with children and young people in South Gloucestershire. We continue to raise awareness of safeguarding and to ensure that everyone has the knowledge, skills and support to keep children and young people safe.

There have continued to be significant progress and improvements made in the local safeguarding arrangements.



The South Gloucestershire Safeguarding Children Board's (SGSCB) Annual Report is a transparent assessment of the effectiveness of safeguarding and the promotion of the wellbeing of children and young people across South Gloucestershire.

This Annual Report sets out what has been done by the LSCB and its partners during the year 2017 to 2018.

- ❖ A very successful annual practice conference was held to consider digital and on-line abuse. It was well attended and the learning was positively received
- ❖ The LSCB has continued to seek the views of children through the Youth Board and through other activities such as the annual conference at which a group of young people enacted a storyline about this.
- ❖ The website has been further updated and improved to make it as accessible and relevant as possible to everyone in the area
- ❖ Local practitioners have attended the multi-agency training and have given positive comments about its value to them
- ❖ The Board has examined the quality of safeguarding work through audits and reviews and has ensured action has been taken when needed.
- ❖ The subgroups of the LSCB have met regularly and carried out a large volume of work.

I have been the Chair of the Board since March 2017. During the last year, there has been a great deal of activity aimed to improve single and joint safeguarding locally. It is clear to me that there have been significant efforts made and that there is a strong commitment by local agencies and senior leaders to keep children safe in South Gloucestershire.

Progress has been made against the required improvements identified from the Ofsted inspection at the end of 2016. At that time, the LSCB was found to be ineffective as it had failed to identify and act upon serious problems with safeguarding in the local. It is clear that those service areas where there were

Message from the Chair

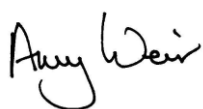
shortfalls have made progress and the LSCB has been involved in influencing and supporting this.

The LSCB is now better informed and has specifically challenged agencies in this year when progress has not been sufficient to address the improvements required to keep children safe. The local authority and all partner agencies are clear now that they act promptly to remedy gaps in the safeguarding system and must inform the LSCB partnership about any failings and what is being done to resolve them. The LSCB has completed several audits and visits to local partner agencies to satisfy itself that the systems and organisational arrangements in place are keeping children safe and improving outcomes for them.

Looking forward, next year will see the implementation of the significant changes to the strategic, partnership arrangements for safeguarding which have now been clarified by Government. There is now a clear timetable for the new local safeguarding arrangements which need to be in place from September 2019. The Children and Social Work Act 2017 has removed the requirement for local areas to have a LSCB. Instead the Police, Health and the Local Authority are named as the key strategic partners for safeguarding and will be required to set up appropriate arrangements to oversee safeguarding for children. There has been no decision about what this will mean for South Gloucestershire and discussions will continue over the next few months.

In the meantime, the LSCB as the current strategic partnership will continue to take forward its plans and its work to keep children safe.

I would like thanks to all those who have worked hard to keep children safe and to make the LSCB succeed in providing a strong local partnership to safeguard children and young people. There is always more to do and I am confident that the coming year will be even more successful for the LSCB.



Independent Chair

South Gloucestershire Safeguarding Children Board



We would like to thank the children and young people in South Gloucestershire who have taken part in the work of the board throughout this year, and for their insight and contributions, many of which are included in this report.

Contents

Introduction by independent chair	2
About the Annual Report	5
Glossary of Terms	6
Living in South Gloucestershire	9
Summary of Safeguarding in South Gloucestershire	12
Communication	17
Progress against Last Year's Business Plan	19
Themed Summary of Activity to Support Safeguarding and its impact on Practice & Outcomes for Children and Young People	
- Domestic Abuse	21
- Online Safety	23
- SEND	25
- Early Help	26
- Child Sexual Exploitation and Missing	27
- Children and Young People	28
Other Key Board Activity & Achievements	29
Learning & Improvement	32
Child Death Overview Panel (CDOP)	46
Vinney Green Secure Children's Home	48
Childhood Injury Prevention (CHIP)	51
Priorities for 2017-18	52
What You Need to Know	53
Appendix One: SGSCB Structure	57
Appendix Two: SGSCB Constitution	58
Appendix Three: Memorandum of Understanding	63
Appendix Four: Membership & Attendance	65
Appendix Five: Finance Report	66
Appendix Six: Inter Agency Training Data	67
Appendix Seven: Business Plan 2017-18	69

The South Gloucestershire Safeguarding Children Board's (SGSCB) Annual Report is a transparent assessment of the effectiveness of safeguarding and the promotion of the wellbeing of children and young people across South Gloucestershire.

In line with statutory requirements and best practice the 2017-18 SGSCB annual report and 2018-19 business plan will be shared with:

- The Director of Children, Adults and Health
- The Chief Executive
- The Police and Crime Commissioner
- South Gloucestershire Cabinet
- Children, Young People and Families Partnership
- The Partnership Against Domestic Abuse
- The Health and Wellbeing Board
- The Safer and Stronger Communities Strategic Partnership
- The Safeguarding Adults Board

This report has been authored by Sarah Taylor, Safeguarding Board Business Manager with the assistance of several contributors including sub group chairs, performance analysts and the independent chair.

The report was approved by SGSCB on 5th October 2018 and published on the SGSCB website on 11th October 2018

Should you require the report in any other format to support accessibility please contact Sarah Taylor with your request: sarah.taylor2@southglos.gov.uk

Glossary of Terms

BNSSG	Bristol, North Somerset & South Gloucestershire CCG
CAFCASS	Child and Family Court Advisory and Support Service
CAMHS	Child and Adolescent Mental Health Service
CDOP	Child Death Overview Panel
CPD	Continuing Professional Development
CQC	Care Quality Commission
CSE	Child Sexual Exploitation
DA	Domestic Abuse
DBS	Disclosure and Barring Service
DV	Domestic Violence
FGM	Female Genital Mutilation
GP	General Practitioner
IRO	Independent Reviewing Officer
LA	Local Authority
LAC	Looked After Child/Children
LADO	Local Authority Designated Officer
LSCB	Local Safeguarding Children Board
MASH	Multi Agency Safeguarding Hub
MAPPA	Multi Agency Public Protection Arrangements
MARAC	Multi Agency Risk Assessment Conference
MISPER	Missing person
PREVENT	A government programme aimed at preventing radicalisation
RHI	Return Home Interview
RPI	Restrictive Physical Intervention
SCR	Serious Case Review
SERAF	Sexual Exploitation Risk Assessment Framework
SGSCB	South Gloucestershire Safeguarding Children Board
SoS	Signs of Safety
SWCPP	South West Child Protection Procedures
YCS	Youth Custody Service

The Board

The SGSCB is the key statutory body overseeing multi-agency safeguarding arrangements across South Gloucestershire. It is governed by the statutory guidance in [Working Together to Safeguard Children 2015](#)

Section 14 of The Children Act 2004 sets out the objectives of LSCBs which are:

To co-ordinate what is done by each person or body represented on the Board for the purposes of safeguarding and promoting the welfare of children in the area and to ensure the effectiveness of what is done by each such person or body for those purposes¹

The independent chair of the SGSCB is Amy Weir. Amy is accountable to the Chief Executive of South Gloucestershire Council, Amanda Deeks.

The South Gloucestershire Safeguarding Children Board Structure can be found in Appendix One. There are several subgroups and an executive group in addition to the main board.

The remit of the Board is clearly outlined in its constitution (Appendix 2) It has a strong commitment from most partner agencies, all of whom sign up to the Memorandum of Understanding (Appendix 3)

The board is appropriately constituted, with wide membership including two lay members. Lay members contribute well to the board's work. An executive group sets the agenda for the board and drives its work programme. It is a strength that the nine sub-groups are chaired by partners, for example the clinical commissioning group, the voluntary sector and the local authority. Most of the sub-groups are well-attended and, when this is not the case, the board robustly challenges the agency concerned.²

Board Membership and attendance for the year can be seen at Appendix 4. Attendance below 50% will be addressed by the Independent Chair. It has become practice to directly challenge partner agencies whose attendance falls below the minimum standard.

During the year the Board has maintained key relationships with the South Gloucestershire Cabinet, The Partnership against Domestic Abuse and The Safer and Stronger Communities Strategic Partnership, Children, Young People and Families Partnership, The Health and Wellbeing Board, the Safeguarding Adults Board, the

¹ Children Act 2014 Section 14

² South Gloucestershire Ofsted Report 2017

Clinical Commissioning Group and the Police and Crime Commissioner. The Board also participates in the Avon & Somerset regional LSCB Consortium in working to address common safeguarding issues.

Partner agencies continued to contribute to the SGSCB budget for 2017-18, in addition to providing other resources such as staff time and venues for meetings. The full financial report can be seen at Appendix 5.

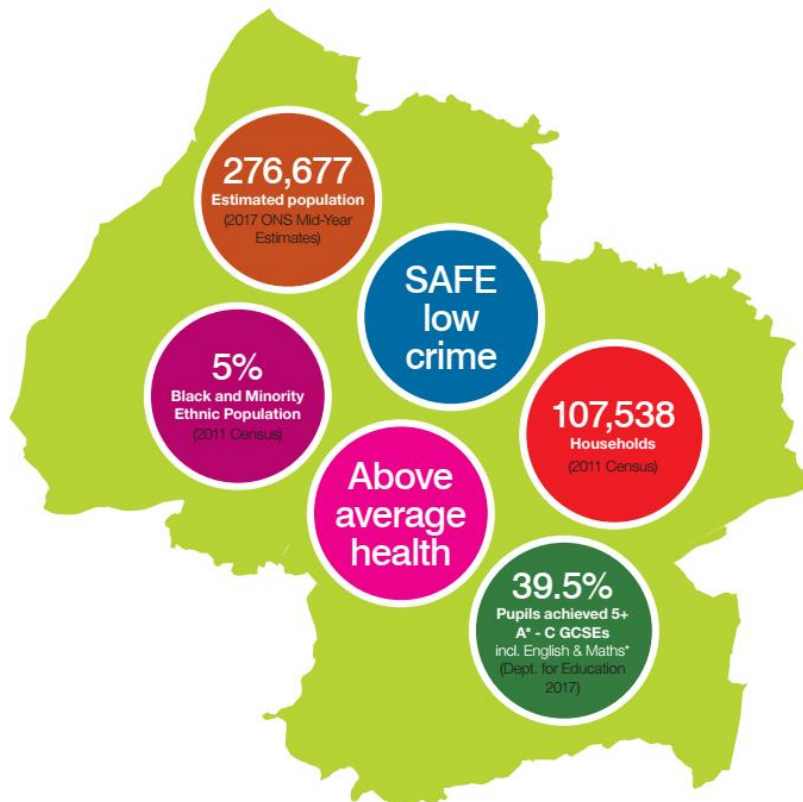
Working Together to Safeguard Children 2015 sets out how effective information sharing between professionals and local agencies is essential for effective service provision. SGSCB plays a strong role in supporting information sharing between and within organisations and addressing any barriers to information sharing. This includes ensuring that a culture of information sharing is developed and supported as necessary by multi-agency training.

Following the publication of the Wood Review and the Social Work Act, the SGSCB has been working with neighbouring safeguarding children's boards to agree new safeguarding arrangements. From January to March 2018, the board was represented in a working group as part of the Avon and Somerset Consortium, looking at possible options for the new arrangements that need to be in place by September 2019. This work under the Avon and Somerset Consortium is continuing into 2018 and 2019.

Living in South Gloucestershire

South Gloucestershire is a mix of long established urban communities, market towns, small villages and substantial new development. Characterised by very differing communities with individual needs and aspirations, the diversity of its landscapes and neighbourhoods contribute to a high quality of life.

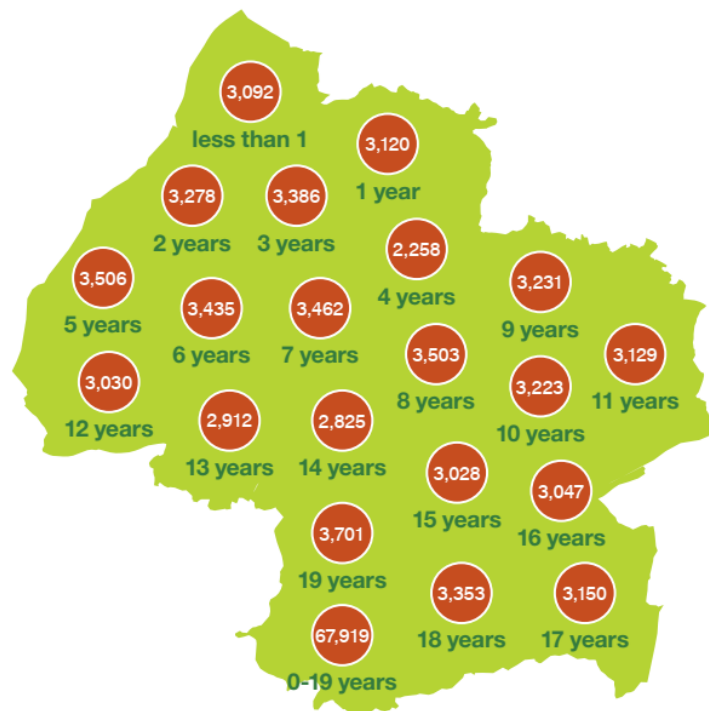
South Gloucestershire's location and its proximity to the city of Bristol present a number of cross boundary opportunities and challenges which are dealt with by working in partnership with the neighbouring authorities of Bristol City, Bath and North East Somerset and North Somerset. South Gloucestershire is served by Avon & Somerset Police Constabulary and a Police and Crime Commissioner.



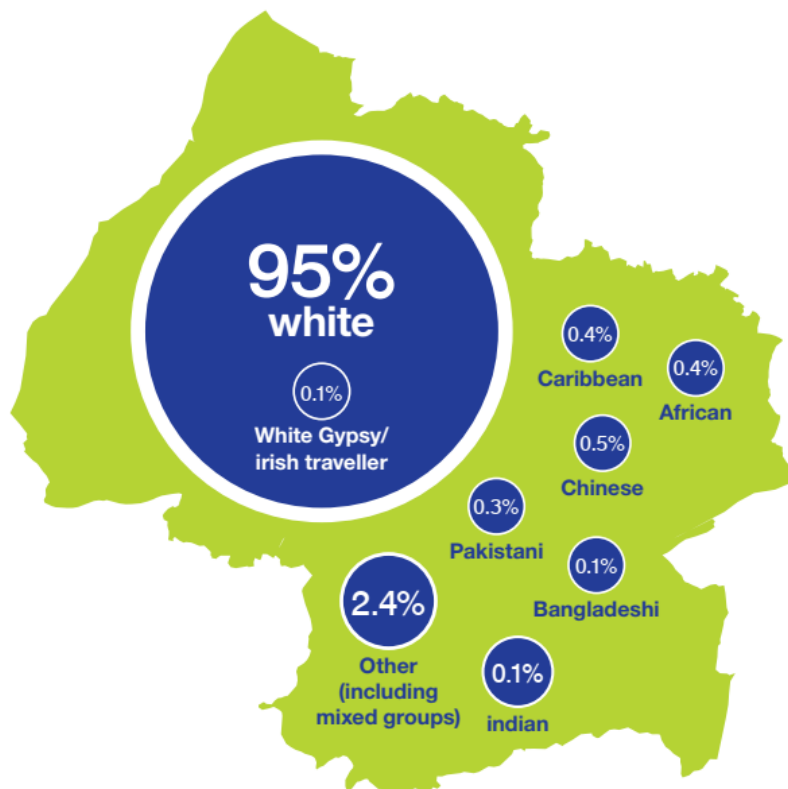
The Department for Education changed their secondary school performance measures in 2016. The main measures are now Progress 8 and Attainment 8. Attainment 8 is being used more generally and the South Gloucestershire 2017 Attainment 8 score was 43.7. Attainment 8 measures the achievement of a pupil across 8 qualifications including mathematics and English, averaged across the school and/or local authority, the attainment 8 score for all schools in England is 44.6

0-19 Population

South Gloucestershire has a 0-19 population of around 67,919. (ONS midyear estimate 2017) This makes up approximately a quarter of the total population. The latest official population projections suggest that the number of the 0-19 year olds will increase to 76,088 by 2039 (ONS 2014 – based Subnational Population Projections)



South Gloucestershire Population Ethnic Groups (4-18) school census spring 2016



Number of Schools and Type



The number of families choosing to home educate their children is rising and in 2017-18 we have seen a sharp rise from 260 in 2016-17 and 146 in 2015-16.

The SGSCB have monitored this rise and receive reports from the Elective Home Education team. The independent chair of SGSCB wrote to schools in January 2018 to draw their attention to [Falling Through the Gaps in Education](#) from the Office for the Children's Commissioner (November 2017) and an [article](#) written by Eleanor Schooling, Ofsted's National Director of Social Care, in December 2017 about the challenges of safeguarding children who are educated at home.

Nationally it is estimated that 45,500 children and young people were being educated at home on school census day, Thursday 5 October 2017. This is roughly equivalent to the population of 49 average-sized secondary schools. Eleanor Schooling's article highlights that we are seeing a change in the reasons for educating children at home. We are seeing more vulnerable children being educated at home when this is clearly not the best option for them:

- there are more children with additional needs now being educated at home.
- children who attend unregistered schools are often recorded as being home educated.
- too often, children are educated at home following a breakdown in relationship between school and family

Summary of Safeguarding Activity in South Gloucestershire

Looked After Children

A child is looked after by a local authority if he or she has been provided with accommodation for a continuous period of more than 24 hours, in the circumstances set out in sections 20 and 21 of the Children Act 1989, or is placed in the care of a local authority by virtue of an order made under part IV of the Act.

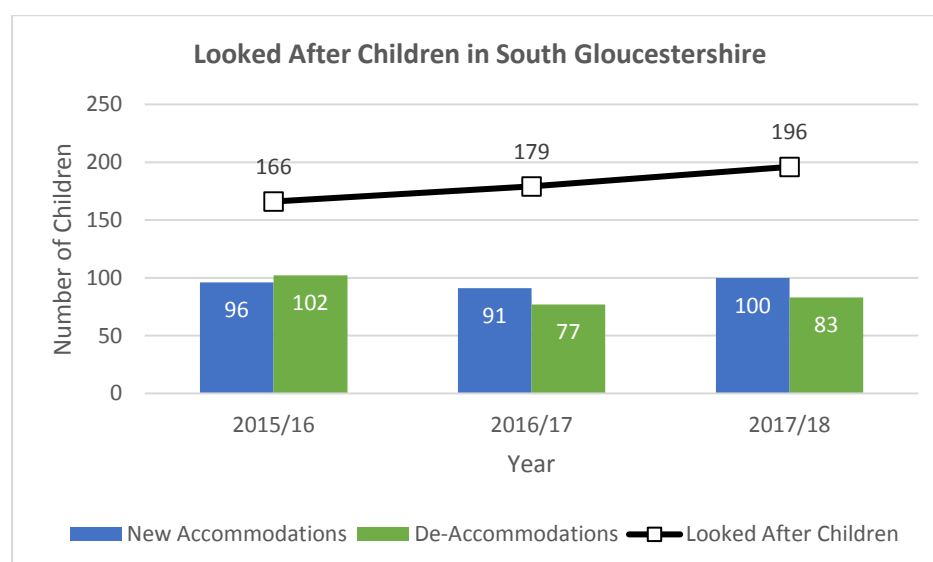
The majority of children who are looked after by the local authority are placed with foster carers as it is believed to be best for children to live within a family environment. For some children however, residential care may be more appropriate.

The number of Looked After Children has risen this year by 9.5%. At the end of 2017/18 there were 196 Looked After Children in South Gloucestershire, an increase of 17 on the previous year. 100 children and young people became looked after in the year (an increase of 9 compared to 2016/17) and 83 children and young people who had previously been looked after ceased to be (compared to 77 in 2016/17).

More males are looked after than females, this is also the case for children and young people becoming looked after in the year, 60 Male and 40 Female. 32.7% of children and young people looked after were aged between 12 and 15, with 27% of children becoming looked after in the year aged 0-4 years.

13.8% of Looked After Children were recorded as disabled, with 3% of children newly looked after in 2017/18 having a disability.

25.5% of Looked after Children were from ethnic backgrounds other than White British, with children from African backgrounds accounting for the highest proportion of those from non-White British groups.



Child Protection Plans

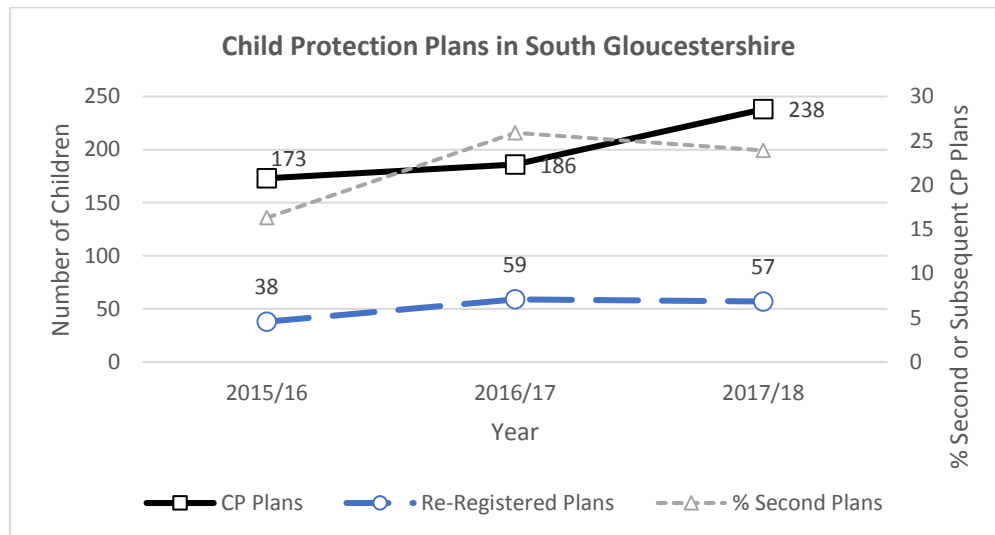
There has been an increase in the number of children and young people subject of Child Protection. 238 children and young people were subject of a Child Protection

Plan during the year 2017/18, an increase (28%) on the previous year and a 37.6% increase since 2015/16.

The number of children and young people becoming subject of a second or subsequent child protection plan, has decreased by 3.4% on the previous year.

There were slightly more males than females subject of Child Protection Plans; the percentage of children and young people who had a disability was 2.1%. Age ranges for children and young people subject to Child Protection varied with the lowest group being 16+ years (8.4%) and the biggest 5 - 11 years (36.6%). The largest number of children and young people subject of Child Protection for a second/subsequent CP plan was in the 5 - 11 year group (38.6%).

71.43% of those subject of Child Protection were from White British backgrounds, increasing to 91.2% of those becoming subject to a second or subsequent Child Protection Plan. Those from non-White British groups who were subject of Child Protection were from a varied range of ethnic backgrounds, with no one significant group.



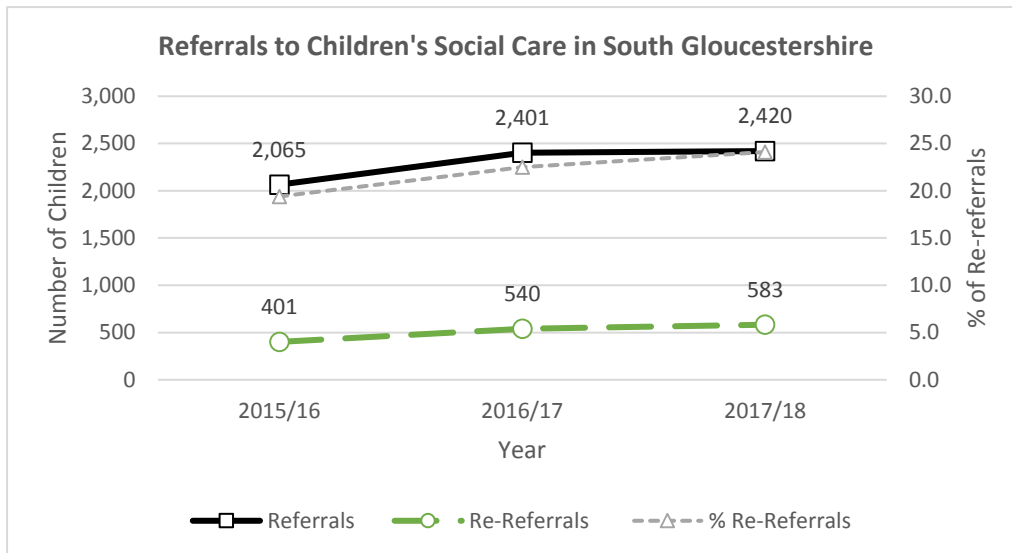
Referrals to Children's Social Care

Over the course of 2017/18 2,420 children and young people were the subject of a referral to social care, an increase of 0.8% on the previous year, the highest figure since 2011/12.

As the number of referrals have increased so has the proportion of re-referrals; with a rise of 8% when compared to re-referral rates in 2016/17. The number of re-referrals is the highest in 6 years (2011/12).

Referrals were split equally between males (49.5%) and females (48.7%), with 36.2% of referrals being made for children aged 5-11 and 24.7% of referrals being for young people aged 12-15.

81% of all referrals were for children and young people from White British backgrounds. Referrals for those from non-White British groups were from a varied range of ethnic backgrounds, with no, one significant group.

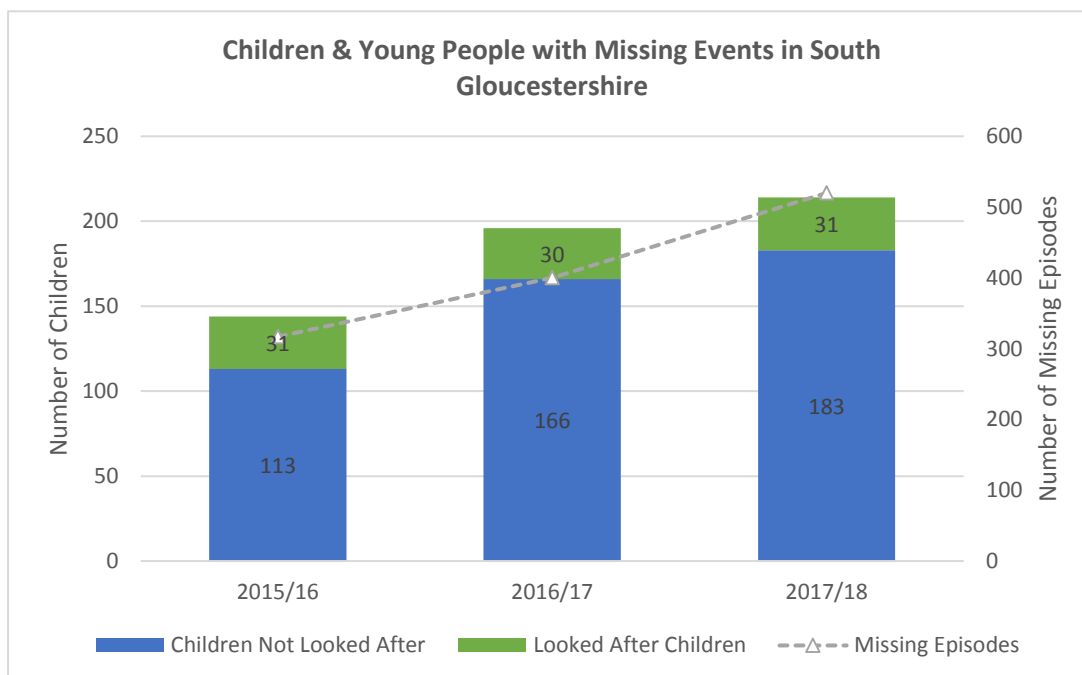


Children and Young People with Missing Events in South Gloucestershire

In 2017/18 there were a total of 214 South Gloucestershire children and young people reported as missing throughout the year. Of these 31 (14.5%) were looked after children. There were a total of 520 missing episodes reported, with 76 (35.5%) young people having more than 1 missing episode in the year.

84% of children and young people reported missing were from White British backgrounds with the other 16% from other or unknown ethnic backgrounds.

174 (81.3%) children and young people reported missing were of secondary school age, with 50.5% aged 14-16 years and 12.1% aged 17-18 years.

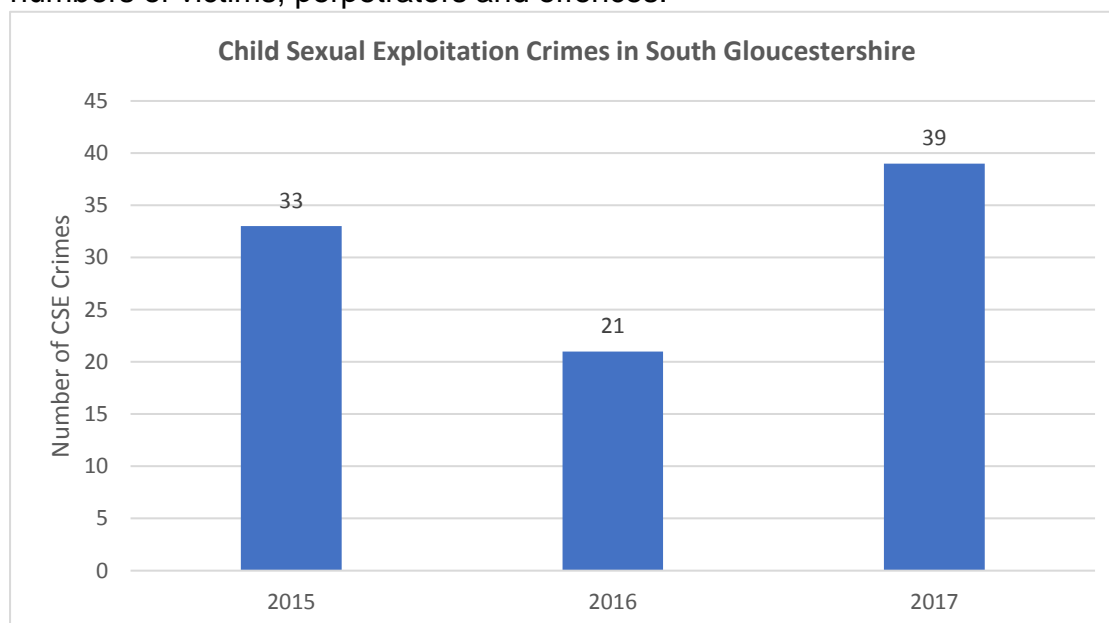


Child Sexual Exploitation Crimes in South Gloucestershire

This data is provided to the South Gloucestershire Safeguarding Children's Board by Avon and Somerset Constabulary as part of the multi-agency approach to safeguarding children.

The Child Sexual Exploitation crime tag was introduced which, in addition to providing safeguarding and investigation benefits, allows the monitoring of crimes that fall within the national definition of CSE.

Recorded CSE tagged crimes in South Gloucestershire increased to 39 CSE tagged crimes recorded in 2017/18, compared with 21 crimes in 2016/17. There were 318 recorded CSE tagged crimes Force-wide. It is important to note that the distribution of recorded CSE tagged crimes, both geographically and over time, can be skewed by a relatively small number of investigations identifying comparatively large numbers of victims, perpetrators and offences.



Safeguarding Activity

Equality Impact Assessment



Equality Impact Assessment

Gathering Data & Monitoring

The previous pages (12-15) include information that has been collected throughout 2017-18 that relates to equalities.

Each quarter the SGSCB receives a performance report which also includes this information.

Analysis

For Looked After Children, 25.5% are recorded as being Black/Black British. Last year this figure was 16.8%. The population in South Gloucestershire is 0.9% Black British. This shows that Black/Black British children are over represented in care when compared to the South Gloucestershire population.

For Children with Child Protection Plans, 13.75% have a disability which is as expected according to our South Gloucestershire population. 28.5% are BME (Black & Minority Ethnic) and this shows an over representation as the population data indicates 8.1% BME community in South Gloucestershire.

The same is true in the number of referrals to Children's Social Care, where 19% of referrals are for Non-White British children rather than the expected 8.1% based on the population of South Gloucestershire.

For children who have missing events, 16% are from non-white or unknown ethnic backgrounds, again this shows an over representation when compared to the population of the local authority.

Action

As a Board we will monitor on an ongoing basis throughout 2018-19 to look for any emerging trends regarding ethnicity. We will do this by examining the performance data at the Performance Executive Group on a quarterly basis.

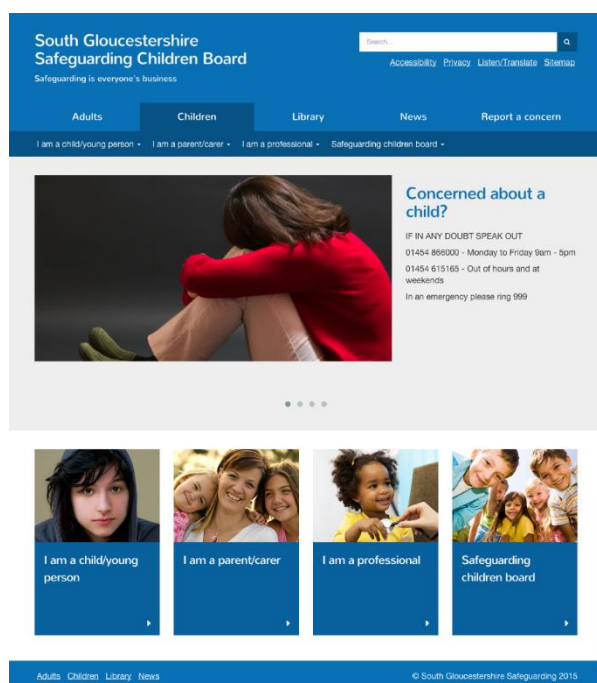
Should trends emerge we will formulate a plan to address this.

Communication

A multi-agency communications group, with representatives from both the Safeguarding Children and Safeguarding Adults boards, meets quarterly. The group is accountable to the boards and works to an agreed annual communications plan, supporting the board's objectives and planning and delivering effective communications to:

- Ensure that safeguarding is everybody's business
- Deliver the common message of "if in doubt – speak out" across all safeguarding services
- Proactively raise awareness of safeguarding issues and the role members of the public can play to create a safer community and enable them to be more likely to recognise and report abuse
- Promote creative and engaging safeguarding campaigns that address the issues identified within our community
- Promote the welfare of people at risk whether they are children, young people or adults, and their rights to be free from abuse.
- Reassure children, young people, adults at risk and their families and the general public that they will be listened to and to give details of what happens if a safeguarding concern is reported.

Key achievements



Significant work has been undertaken by the SGSCB to develop its digital capabilities to communicate with all stakeholders. The website is central to this work.

The SGSCB website is accessible, mobile device friendly, easy to navigate and well used. The SGSCB website has received 38,075 page views over the last year.

The most visited page on the SGSCB website for 2017/18 has remained consistent through the year and is the [Safeguarding Guidance, Procedures and Plans](#) page.

The website also hosts a range of interactive content such as YouTube videos to highlight key issues such as CSE.

Communication

CSE Campaign

This year a campaign was launched with local secondary schools. Each school was provided with an assembly pack, postcards to give to parents and posters to use in school. This campaign coincided with CSE Awareness day on 18th March. The assembly pack entitled 'Child Sexual Exploitation (CSE) – this won't happen to me!' aimed

to raise awareness for young people about the signs of Sexual Exploitation. All of the materials for the campaign can be found [here](#)

Feedback from schools included

All our staff have been trained. The materials were brilliant and we delivered assemblies to all students in years 9, 10 & 11. We gave the postcards out to parents and put a link on our website

We had set this week up with information to parents, tutors, heads of year, information on our screens, so that the assembly wasn't the first they'd heard of CSE. This also ensured that support was in place if needed and the tutor activities following this helped too.

Young people in South Gloucestershire were consulted throughout the process and their suggestions and alterations made before the posters were produced:

*"I value myself again, I feel happy again.
Feel like I own my life again"*

*"I know that the things that have
happened to me are not my fault and
things can get better"*

*"Having someone who
listened and actually
heard what I was
saying has really
helped"*

Exploited
children are led
to believe they
are in a normal
or loving
relationship

Part of the wider awareness raising promoted by the Communication and Engagement sub group was a banner to be added to email signatures for partners from all agencies and this was distributed via board members to their organisations.



Future plans include extending this campaign for primary schools and Special Schools in 2018-19.

Communication

Progress against Last Year's Business Plan

To ensure there is effective multi-agency action to identify, assess and reduce the risk of child sexual exploitation

- ✓ SERAF reviewed and updated, uploaded onto [website](#) along with guidance to complete and a model version to support practitioners
- ✓ Over 200 children's services staff were trained in the use of the SERAF with ongoing mop up sessions taking place to support new staff
- ✓ [Multi-Agency CSE guidance](#) was rewritten and relaunched
- ✓ Multi-Agency CSE training programme with over 20 courses running through 2017-18
- ✓ CSE/Missing data reports reviewed quarterly at merged CSE & Missing subgroup
- ✓ Risk Assessment pathway being developed

To actively seek to capture and act upon the voice of those affected by safeguarding concerns

- ✓ CSE & Missing Sub group received feedback for practitioners directly from a group of young people, which was disseminated and put into practice
- ✓ Feedback received by the board from the online pupil survey
- ✓ Multi-Agency Audits now give children and families the opportunity to share their views within each quarterly audit

To ensure that children within the 0-25 service receive an appropriate and timely response in relation to safeguarding concerns

- ✓ New multi-agency sub group of the SEN Partnership Board established and will survey organisations, create guidance and report back to the Partnership board and SGSCB
- ✓ Training about Child Protection and Disabled children has been reviewed and updated, all training providers have been requested to review their training content to ensure the needs of disabled children are integrated
- ✓ Regular reports have been received by the SGSCB about progress in the 0-25 team through the year.

To challenge and assure the quality of safeguarding practice in South Gloucestershire

- ✓ Section 11 Audit took the form of an interagency walkabout conducted across agencies in conjunction with neighbouring LSCBs
- ✓ Early Help Review commissioned and took place during 2017-18. Regular feedback and reports to the board
- ✓ Visits to Eastwood Park Prison have taken place, their safeguarding policy has been reviewed and updated by the Policy and Procedure sub group. LADO visits have been delayed as Mother and Baby Unit has not yet reopened.
- ✓ Six monthly reporting to the SGSCB about private fostering, single agency audit undertaken. Draft pathway for private fostering assessments completed
- ✓ FGM training published, learning briefing circulated, FGM guidance reviewed
- ✓ QA Audit process reviewed and Terms of reference for sub group updated

To ensure that the processes of the Board are rigorous and effective and are evaluated for their impact on outcomes for children

- ✓ Action log tracker, risk register and challenge log all in place and are standing items on each agenda
- ✓ Business plan in place and reviewed at board meetings for progress
- ✓ Board Member survey completed to help board understand effectiveness of dissemination of messages to practitioners
- ✓ Single page board summary produced and circulated after each full board and published [here](#)
- ✓ Performance data reviewed at a newly created 'performance executive' meeting and presented to the full board with a front sheet summary in signs of safety format
- ✓ Single and multi-agency audit summaries are presented at each board
- ✓ Annual report format strengthened, and presented with key themes
- ✓ Work plans created for all sub groups and terms of reference updated
- ✓ Training needs analysis undertaken and theme of board conference chosen as a result of this
- ✓ Quarterly newsletter and fortnightly board manager bulletins circulated
- ✓ Practitioner Forum launched in June 2017
- ✓ Learning from Triennial Review of SCRs reviewed by SCR sub group and circulated

Domestic Abuse

What Has Worked Well?

A new pathway for multi-agency training has been established and commissioned by the South Gloucestershire Safeguarding Children Board. The training is delivered by Sea Change and there are three separate one day courses, an intermediate, advanced and working with perpetrators course.



The training has been well received by practitioners and in the 2017-18 period 273 attended across the three courses.

Feedback from professionals includes:

Confidently complete DASH when required, use direct questions to gain the specific knowledge

Be more mindful of the impact of DA on the victims and children as well as their responses towards services and perpetrators.

Be more aware of possible perpetrators and managing my internal judgements

All course delegates are notified after 3 months that the LSCB would like them to complete a brief questionnaire to help understand the extent to which learning is being transferred into practice.

The three questions asked are:

- To what extent has your knowledge increased?
- To what extent has your confidence to do your job improved?
- What have you done differently in your practice/setting as a result of this training?

The following demonstrates impact on practice following attendance at Domestic Abuse Training.

"I advocate DASH screening for practitioners working with victims of DV. It has improved my knowledge of the systems and organisations in place and their role when I attend MARAC." (Sirona employee)

"Been able to better understand impact of DV and ways to manage and support families I work with." (Children's Centre Engagement Worker)

"I have been more aware of the signs of domestic violence when working with families in their homes. I have been able to highlight these to social care with one of my cases for the reason that I am concerned about the well-being of the children in the household. I have been able to explain to parents more about what domestic violence is and change their perceptions." (FYPS Worker, Local Authority)

Domestic Abuse

"I have a wider knowledge of Domestic Violence and Abuse Training which has enabled me to identify areas of concern more effectively and have an understanding of how to spot cases that are more coercive in nature." (FYPS Worker, Local Authority)

"Models such as Bancroft have given me more insight." (Specialist Mental Health Nurse)

"I have thought about the signs of DV in relation to some of my cases and considered whether DV may be having an impact." (Social Worker)

"I use some of the 'science' facts about DV/neglect/brain development with parents who are struggling to recognise that DV may impact on their children in the womb or as a young infant in another room. I'm careful to try to balance the fact that DV may have already impacted on their child, with their opportunity to make a difference to this and make changes in their parenting e.g. recognising certain behaviour from their child that may be indicative of trauma, and how to respond to this, support available etc." (Social Worker)

The policy and procedure sub group have been reviewing a new multi-agency Domestic Abuse Toolkit for practitioners. Alongside this, during 2017-18 practitioners piloted the toolkit and gave feedback. The finalised document will be available in October 2018.

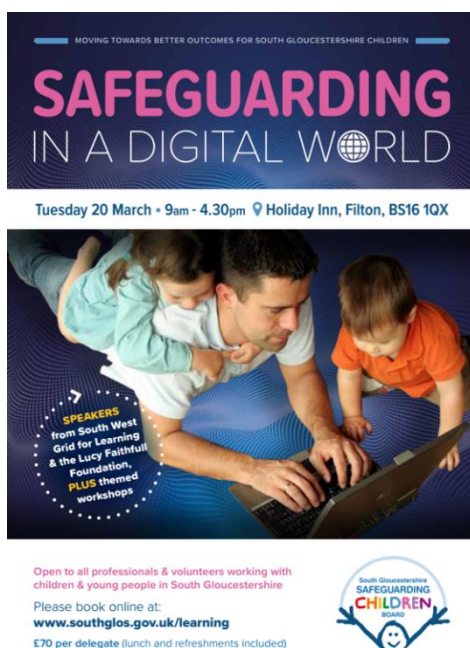
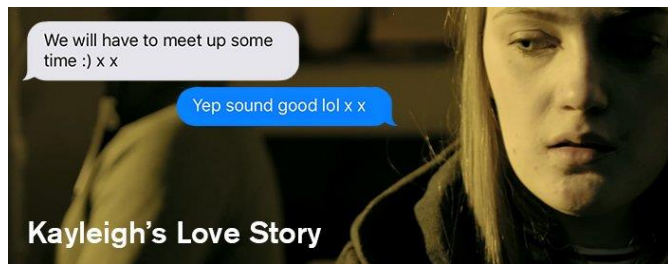
Joint work has been ongoing this year between the Partnership against Domestic Abuse (PADA) and both safeguarding boards to agree and finalise a Domestic Abuse Strategy.

Online Safety

What Has Worked Well?

The multi-agency Child Protection Update training includes a section on online safety, including showing 'Kayleigh's Love Story' and an online safety quiz.

Both have increased practitioner knowledge around the risks to children and young people of meeting people offline and how various Apps can be used and what the risks are according to parents and children and young people.



The online safety sub-group, along with the training sub-group, organised the South Gloucestershire Safeguarding Children Board Annual Conference which took place on the 20th March 2018. The theme was 'Safeguarding in a Digital World'. This theme was selected as a result of learning from the training needs analysis questionnaire responses. The Keynote address was given by Dr Peter Buzzi, David Wright (South West Grid for Learning) and Steve Davis (Lucy Faithfull Foundation) and workshops included the presentation of a new risk and resilience model around digital and holistic safeguarding, the latest digital trends, online sexual abuse, supporting families to keep safe online and children and young people's emotional wellbeing; and young people from the Youth Board contributed to the conference by preparing and delivering two fantastic sessions about YouTube and Facebook.

The conference was attended by 78 professionals and delegates came from a wide variety of agencies working with children in South Gloucestershire. Feedback included:

I will incorporate learning within supervision with foster carers to ensure safety

I will be better able to help young people understand the risks of being online and help them mitigate/balance those risks

I will talk to young people about some of the issues that may be impacting on their self-esteem



Online Safety

Other conference feedback included:

- Excellent, informative and extremely thought provoking
- Challenging but interesting content
- Hope to consider the feedback from children and think more about prevention
- To consider whether taking the device away is the best idea
- More of the child's voice would be good
- Being more mindful of how social media can be positive
- Much more open to use social media and far more informed
- Brilliant, I've learnt so many new things!
- Excellent – liked the choice of workshops. Wish I could have attended more

The training needs analysis questionnaires indicated that practitioners would find further training about online safety issues helpful. However when training was advertised to meet this need, both of these two multi-agency online safety training courses had to be cancelled due to low numbers. The training is being rebooked and increased publicity will be circulated to try and address this.

SEND

Prior to the Ofsted inspection in December 2016, the staffing and management situation in the 0-25 children's social care team was critical. Recruitment and retention of social workers and managers was very difficult, consequently there were unallocated cases and children and families were not getting the support that they needed.



Since April 2017 there has been a relentless focus on recruitment and retention. An experienced Service manager was seconded to manage this 0-25 service in April 17, this is now a permanent arrangement. All disabled children's social care team posts within the 0-25 service are now filled with permanent staff, there are no vacancies and no agency staff.

A basic core training plan for the 0-18 team has been implemented, along with a 0-25 whole service training and development plan. All SWs and managers within the 0-18 team have begun to undertake this core mandatory training and will continue to do so over the next 12 months.

Two 0-25 management team development days took place in 2017. These were very successful days and work focussed on setting high expectations; developing an effective leadership team; finalising the Training and development plan for the year ahead; Improvement action planning and confirming the vision for the 0-25 service.

Two whole 0-25 service team meetings have been held and run by the service manager, which have brought the service together to talk about commonality and future working together.

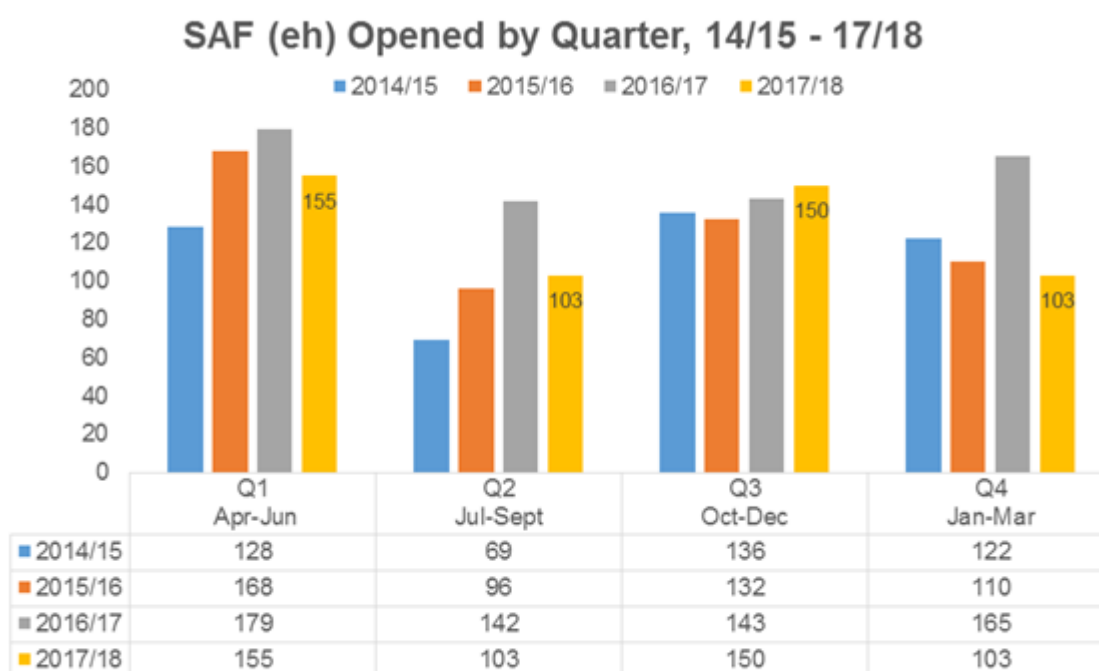
In addition to this work within the 0-25 team, it is recognised that SEND is a much wider issue than the children represented within this team, and that many more children with additional needs are growing up in South Gloucestershire.

With this in mind a new sub group was established in January 2018 with a focus on safeguarding disabled children and those children with SEN in the wider community.

The group will consider a model and process for the SGSCB to be assured that SEND children and young people are safeguarded by the key organisations with which they come into contact

This sub group have created and issued a self-assessment that has been sent out widely to schools, safeguarding board partners and care providers, so that a clear picture of practice and provision, alongside areas of weakness can be identified. The business plan for 2018-19 will incorporate learning from this self-assessment.

Early Help



Early Help

An external review of the Early Help arrangements in South Gloucestershire was completed in November 2017 by the organisation Peopletoo.

A multiagency project board and supporting sub group structure has been set up to address the issues and recommendations outlined in that report. This is enabling both a re-energising of early help work across the partnership and will provide opportunities for available resources to be re-focused to where they are needed most.

A clear articulation of the new Early Help Offer for children, young people and their families will be out for consultation by January 2019 and during Autumn 2018 partner engagement events are planned.

The new Early Help Offer will require some systems changes and re-deployment of available resources; both of which will take some time. To be successful these changes will need strong multiagency commitment at all levels.

Meanwhile the aim is to ensure that current Early Help work continues to take place and is well supported during the period of change and to complete the work being undertaken by the Early Help Project Board and sub groups including a revised Early Help Strategy and Implementation plan.

Child Sexual Exploitation and Missing Children

One element of the Safeguarding board business plan for 2017-18 was to merge two sub groups.

In September 2017 the Child Sexual Exploitation sub group and Children Missing from Home Care and Education sub group became the CSE & Missing sub group, the work of these two groups included many shared themes and this new group ensures the board has linked these together.

A clear, quarterly multi-agency data set has been developed to be able to compare between quarters and identify themes and patterns. Commentary and analysis is also provided by members of the data team alongside the consultant social workers.

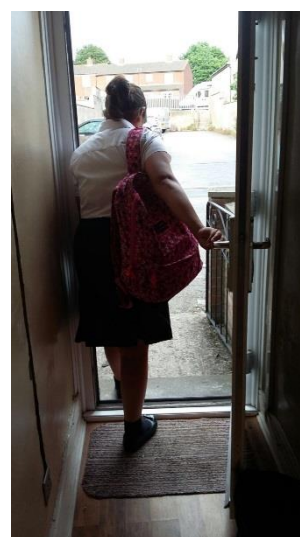
The sub group is responsible for the ongoing monitoring of SERAFs (Sexual Exploitation Risk Assessment Framework) and Return Home Interviews (RHIs), including timeliness and quality. Feedback from Ofsted monitoring visits have also been actioned by the group.

A 'Use of language' document has been produced and circulated to practitioners in response to reviewing SERAFs and records that contained language that appears to blame children for situations. This has been circulated widely and published [here](#) to support practitioners and an improvement has been reported.

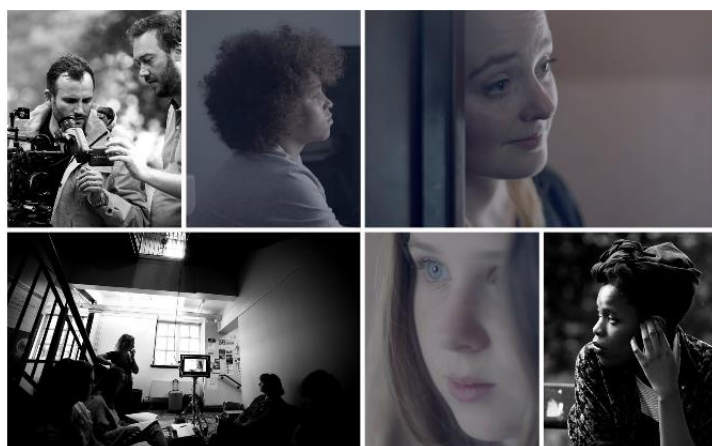
When a child is reported missing to the police in South Gloucestershire this 'misper' report is shared with the relevant school to ensure joined up working.

A specialist CSE police team, named 'Topaz', who had previously only worked with Bristol children is planned to extend to South Gloucestershire.

Recommissioning of the provider specialist service working with some children identified to be at the highest risk of exploitation took place and the contract was awarded to Barnardo's BASE (Barnardo's against Sexual Exploitation).



CSE & Missing



Young people working with BASE produced Free from Fear – a series of three short films about CSE. The young people were involved at every stage - from agreeing the budget, interviewing and recruiting the media firm, designing the films, approving scripts, casting actors and agreeing the final edits, they were in control as young commissioners and creative producers. The films were

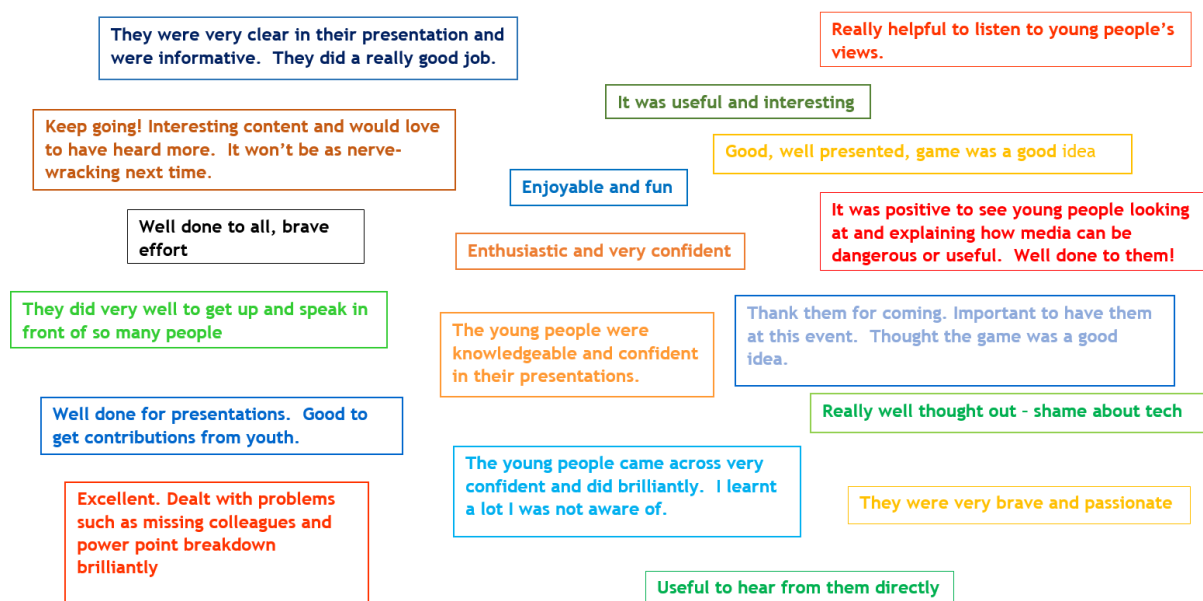
launched at a premiere at the end of October 2017. South Gloucestershire Safeguarding Children Board helped to fund this piece of work. You can watch the films [here](#)

Engagement with Children and Young People



Children & Young People

Members of the board worked with the Youth Board to prepare two sessions for the 2018 LSCB conference. The young people shared their thoughts and experiences about their use of technology. When the evaluations were gathered at the end of the conference the feedback about the young people was collated and fed back to them. The feedback about their participation is summarised here:



Young people's views are represented when policies are reviewed and the terms of reference of the Quality Assurance sub group have been updated in order that when a multi-agency audit takes place the children and families are contacted to give their views alongside the agencies involved. The independent chair received a letter from a young person in March 2018, about the content of the website about anti bullying and the project they were taking part in. Their suggestions were agreed and the website updated. The chair suggested a safeguarding award for children and young people who get involved with safeguarding projects in South Gloucestershire and this has been added to our business plan for 2018-19.

Local Authority Designated Officer (LADO)

Working Together to Safeguard Children 2015 requires Local Authorities to have in place a Designated Officer to be involved in the management and oversight of allegations against people who work or volunteer with children.

“The Designated Officer provides advice and guidance on how to deal with allegations against people who work with children to employers and voluntary organisations; liaise with the police and other agencies to monitor the progress of cases and ensure that they are dealt with as quickly as possible, consistent and with a thorough and fair process”.

The Local Authority Designated Officer should be alerted to all cases where it is alleged that a person working with children has

- Behaved in a way that has harmed or may have harmed a child
- Possibly committed a criminal offence against a child or related to a child
- Behaved towards a child in a way that indicates they may pose a risk of harm to a child.

From January 2017 we have recorded referrals to the LADO that do not meet the threshold but have warranted discussion and enquiry to determine this. This is an increasing area of LADO work. This year there are 30 recorded referrals which correctly identify a concern, require action by the employing organisation, but have not met the LADO threshold.

As in previous years workers having the most contact with children; Residential care staff, foster carers and teachers are those whom are most likely to have an allegation made against them.

20 allegations have been made about care staff and foster carers

16 allegations in relation to school staff (teaching and non-teaching)

7 allegations in relation to Early Years staff

The Allegations Management process allows for a number of possible outcomes:

- Substantiated
- Unsubstantiated
- Unfounded
- Malicious

The Department for Education (DfE) have altered the outcome *unfounded* and replaced this with *false*. In agreement with the DfE the South West LADO Group have agreed to the continued use of the outcome unfounded. The definition for this is “this indicates that the person making the allegation misinterpreted the incident or was mistaken about what they saw. Alternatively they may not have been aware of all the circumstances. For an allegation to be classified as unfounded, it will be necessary to have evidence to disprove the allegation”. This is very different from “false” which implies that the person making the allegation has been untruthful.

Allegations

PREVENTING RADICALISATION

Radicalisation involves persuading others of a world view that rejects society and encourages the use of violence to change society.

The *Prevent* programme is part of the national counter-terrorism strategy and involves identifying individuals being radicalised and drawn into terrorism or violent extremism, and working with those individuals – on a voluntary basis – giving them support and guidance to turn them to a different path.

The Counter Terrorism and Security Act 2015 places a statutory duty on local authorities such as South Gloucestershire Council to assess the risk of radicalisation in their local area and to take appropriate action in response to that risk.

At the end of the 2017/18 financial year the national threat level from terrorism is 'Severe', meaning a terrorist attack is highly likely. South Gloucestershire is classed as a low-risk area. As such it receives no Home Office funding to deliver its Prevent work. However that does not mean there is no risk in South Gloucestershire.

The Prevent Board for South Gloucestershire co-ordinates work between key organisations operating locally. There is a formal relationship between the Prevent Board, the Local Safeguarding Children Board and the Safeguarding Adults Board which includes the Council's Strategic Safeguarding Service Manager being a member of the Prevent Board. The Prevent Board's detailed Annual Report is presented each year to the Local Safeguarding Children Board and the Safeguarding Adults Board.

Approach to Prevent in South Gloucestershire

While the national and media coverage of *Prevent* focuses on referrals, the philosophy in South Gloucestershire is that in order to reduce the risk of dangerous extremism we need to deal with the causes of this such as hate, discrimination, or alienation, not just the symptom of radicalisation.

Our local approach is therefore about building relationships and community confidence, to get local communities to develop the confidence to be involved, as well as about identifying and supporting individuals of concern.

Activity in 2017/18

During 2017/18 the Board supported a voluntary sector partnership which developed a comprehensive and integrated programme to improve community cohesion across South Gloucestershire. This aims to coordinate work to develop safe, inclusive, strong and resilient communities across South Gloucestershire.

The plan has five action areas:

1. Develop coordinated community responses to respond to critical incidents.
2. Improving and maintaining positive and effective knowledge and attitudes.
3. Equip children, young people and schools with the skills they need to stand up for shared values and to challenge prejudice, extremism and discrimination in their communities.
4. Understand the role that faith communities can and want to provide in offering the hand of friendship to people from different faiths, cultures and communities.
5. Create communities in which people feel valued, welcome and able to participate.



Communication material aimed at front line practitioners and at voluntary groups and communities was produced and distributed in order to de-mystify some of the issues and concerns around the *Prevent* agenda.

Detailed training in *Prevent* continued to be delivered to schools and school governors. This training was also delivered to an extended range of those working with children and

young people including Voluntary, Community and Social Enterprise (VCSE) sector organisations, foster carers, nurseries and pre-school groups.

Material produced and circulated by the Board to help people recognise and report far right symbolism was well received both within South Gloucestershire and across the West of England. This guidance is promoted on the local safeguarding websites.

Prevent Referrals

There were 15 *Prevent* Referrals during 2017/18, and one case was referred for consideration at Channel, the multi-agency process for supporting those at risk of drawn into violent extremism. This case is now closed.

Looking forward

The major development in *Prevent* is the transfer of responsibility for case management from the Police to local authorities. This system, known as Dovetail, is currently being piloted across the North-West and the Board is keeping a close eye on it in order to prepare for its roll-out to South Gloucestershire.

Learning & Improvement



'Local Safeguarding Children Boards should maintain a local learning and improvement framework which is shared across local organisations who work with children and families. This framework should enable organisations to be clear about their responsibilities, to learn from experience and improve services as a result'

Working Together to Safeguard Children 2015

Reviews of Practice

Serious Case Reviews and Case Reviews

South Gloucestershire Safeguarding Children Board has not undertaken any Serious Case Reviews during 2017-18.

The Board continues to have oversight of Serious Case Reviews undertaken regionally and nationally and a quarterly list of summaries of learning from these is disseminated to board members for circulation quarterly via the board manager bulletin and can be found on the website [here](#). There has also been a summarised version of the Triennial Analysis of Serious Case Reviews produced and circulated to practitioners via Board members in September 2017. You can find a copy of this summary [here](#)

The serious Case Review sub group also:

- Monitors the progress of action plans that are identified as a result of a SCR or case review. During 17-18 the action plans for Chloe, Thomas and Ben were identified and quality assured as complete.
- The SCR sub group facilitated a review of an incident and the writing of an agreement between Vinney Green Secure Unit, health and the police in respect of expectations and understanding of restrictions to roles when a young person claims to have drugs secreted in a part of their body.
- The sub group reviewed two cases that were referred from CDOP.
- The sub group ensured the review and the learning from the 'Becky' SCR in Bristol was shared and discussed, this was followed up by asking members of the practitioner forum to survey members of their organisations to check their knowledge and understanding about this review.

There have been opportunities to learn from practice, and for each of these a summarised Learning Brief has been produced and circulated to Board members for wider dissemination in their organisations and agencies. They are also published on the Board Website [here](#).

Learning & Improvement



Definition

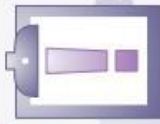
Female Genital Mutilation (FGM)
 The World Health Organisation has classified FGM as:
"all procedures that involve partial or total removal of the external female genitalia, or other injury to the female genital organ for non-medical reasons"

1. Clitoridectomy: partial or total removal of the clitoris
2. Excision: partial or total removal of the clitoris and the labia minora, with or without excision of the labia majora
3. Infibulation: narrowing of the vaginal opening through the creation of a covering seal.
4. Other: all other harmful procedures to the female genitalia for non-medical purposes, e.g. pricking, piercing, incising, scraping and cauterizing the genital area.



Watch for..

- A child spending long periods of time away from the classroom during the day with bladder or menstrual problems;
- A child having difficulty walking, sitting or standing;
- Prolonged absences from school; especially with noticeable behaviour changes on the girl's return could be an indication that a girl has recently undergone FGM;
- the emotional and psychological needs of children who may be/are suffering the adverse consequence of the practice, e.g. withdrawal, depression etc;
- A child asking for help or confiding in a professional;
- A child requiring to be excused from physical exercise lessons without the support of her GP;
- Recurrent Urinary Tract Infections (UTIs) or abdominal pain



Duty

The Serious Crime Bill was amended in 2015 to include a

Duty to Report

For Health Care, Social Care and all Education professionals.
 This is now a mandatory professional duty for suspected cases of FGM
 Training is available to support Practitioners here



The Law

Female Genital Mutilation Act 2003
 All forms of FGM are illegal under the Female Genital Mutilation Act 2003.

1. It is an offence if anyone aids, abets, counsels or procures any form of FGM for a girl or a woman for cultural or non-medical grounds;
2. This act makes it an offence to take a UK national or resident overseas for the purpose of or to aid and abet, procure or carry out FGM;
3. Any UK National or resident is protected;
4. A person is guilty of an offence if he/she aids a girl to carry out FGM on herself;
5. There are defences with regard to this Act. No offence is committed by an approved person (i.e. midwife or medical practitioner or person training to fulfil these roles) if they perform such a surgical procedure necessary for the girl's physical or mental health or in relation to a birth or labour;
6. The penalty for FGM is up to 14 years of imprisonment

Female Genital Mutilation Briefing Sheet



Action

If you suspect a child might be at risk of this practice or has already undergone FGM you must contact

ART 01454 866000

or the Police on 101



Signs & Indicators

- Any female child who has a sister who has already have undergone FGM must be considered to be at risk, as must other female children in the extended family.
- Parents from practising communities state that they or a relative will take the child out of the country for a prolonged period;
- A child may talk about a long holiday to her country of origin or another country where the practice of FGM is prevalent, including African countries and the Middle East;
- A child may confide to a professional that she is to have a 'special procedure' or to attend a special occasion;
- A professional hears reference to FGM in conversation, for example a child may tell other children about it (be aware of the wide variety of descriptions);
- A child may request help from a teacher or another adult;
- Any female child born to a woman who has been subjected to FGM must be considered to be at risk, as must other female children in the extended family;

Learning & Improvement



Audit Team

CSE Multi Agency Audit
took place in July 2017
and included
practitioners from

- Children's Social Care
- Barnardo's BASE
- Health
- Youth Offending Service
- Education
- Police

Audits are planned to take place twice a year

Background to Case Audit

10 cases were selected, and 9 cases were audited due to time restraints. All the children were on the CSE List in South Gloucestershire. The group used an audit tool and spent the last hour of the day considering themes that emerged during the audit.



What Worked Well?

Overall it was recognised that progress has been made. There was evidence in all cases that staff from different agencies have an understanding about CSE, the risks to children and attempts to reduce the risks.

One case showed a good working relationship between BASE and Social Care

Some clear recording in GP records about risk of CSE



Recommendations

1. When primary reason for CP plan is CSE, the category should always be Risk of Sexual Harm
2. Reminder to Social Care to share CP plan information with GPs
3. Aide memoire for practitioners to support good practice with recording clear plans
4. Work with sexual health clinics to ensure greater multi agency involvement
5. Disruption plans should be clear on children's files
6. Further work identified to support schools, including PRUs and explore action for home educated children
7. Perpetrator information to be collated and reported via CSE/Missing sub group.
8. Briefings to staff will highlight need for early completion of SERAF
9. Future audits will be limited to eight cases



Theme: CP Plans

5 of the 9 children are currently subject to a CP plan.

Not all the children's plans were under the category of sexual abuse, even though this was the main risk.

Two of the children were looked after children, and the case audit demonstrated that a CP conference should have taken place for one them.

The auditors identified confusion across agencies about CP plans for Looked After Children



Theme: Prosecution

In a significant number of cases, the child had made a statement and retracted, didn't want to pursue a prosecution(S) or had not made allegations. Police investigations had been NFA'd where a child didn't want to pursue. There were no clear multi agency plans around disruption efforts evident in records



Theme: Delays

Some concerns were raised about timeliness in identifying risk and planning to reduce risk.

This included:

- Delay convening strategy discussion
- Delay completing SERAF



Theme: Education

Most children were not attending mainstream education.

- 2 are home schooled
- Several attend the PRU
- School exclusion was common in the audit group.



Theme: Information Sharing

Large variations were found. GP & School Nurse records showed some cases where there was a clear record of CSE concerns for the child, however in other cases there was no reference to any CSE concerns.

In one case records did not show that a child was subject to a CP plan.

There was a lack of information about sexual health clinic involvement, with records showing a plan for a child to attend, but no follow up recorded.

Information had not always been shared with BASE about children, even though all the children were on the CSE list.



Learning & Improvement



External Learning



Monitoring Visits undertaken by Ofsted in September 2017 and January 2018

Children's Services in South Gloucestershire were visited twice for monitoring visits by Ofsted in 2017-18. This follows the full inspection in 2016, where an inadequate rating was given. A comprehensive improvement plan is in place to address all of the recommendations made and this is monitored by an Improvement Board with an independent chair. The SGSCB receives regular updates and the Board Business Plan reflects the priorities for change identified

Key Messages:

- 🔑 Pace of improvement is too slow
- 🔑 Quality of audits is variable
- 🔑 The Local authority has been successful in ensuring social workers have manageable caseloads
- 🔑 All children have an allocated social worker
- 🔑 Timeliness of return home interviews has improved
- 🔑 Quality of child in need plans is improving
- 🔑 Timeliness of child protection conferences has significantly improved
- 🔑 Appropriate steps are being taken to improve understanding about sexual exploitation



Joint local area SEN and disabilities inspection in South Gloucestershire November 2017



This inspection was undertaken jointly by Ofsted and Care Quality Commission (CQC) to judge the effectiveness of the area in implementing the disability and special educational needs (SEN) reforms as set out in the Children and Families Act 2014. This inspection determined that a Written Statement of Action is required because of significant areas of weakness in the local area's practice the local authority and the clinical commissioning group are jointly responsible.

- 🔑 The pace of change has been too slow
- 🔑 The strategy is still at the consultation stage
- 🔑 Children are experiencing lengthy delays
- 🔑 Parents and Carers reported that the local offer is not easy to use
- 🔑 Leaders in South Gloucestershire have ensured there is a high quality health service for children who are looked after
- 🔑 Rates of completion for EHCP (Education, Health and Care Plan) plans is improving
- 🔑 School nurses implemented an innovative mental health risk assessment tool
- 🔑 Specialist workers within CAMHS (child and adolescent mental health services) is a strength

Learning & Improvement



South Gloucestershire and Stroud College

SGS College had a two day short Ofsted inspection on the 17th and 18th October 2017. The college were considered to continue to be a 'Good' College. Within the inspection safeguarding was rated robust and this looked at processes, policies and procedures around keeping children safe and incorporating reporting concerns, staff training, safer recruitment and allegation management.

Youth Offending Service



In August 2017 South Gloucestershire Youth Offending Service (YOS) was part of the Thematic Inspection into Out Of Court Disposal (OCD) work. A total of 8 YOSs were inspected, out of a total of 152. The Inspectors were here for 4 days. It was not the remit of the Inspectors to focus on individual YOSs but examples of all YOSs good practice, including South Gloucestershire, were highlighted in the report. The Inspection focussed on a number of areas:

- governance and leadership
- the Police
- decision making processes
- case management

Overall the Inspection found 'clear leadership of out of court disposals in local partnerships' and saw that OCD work was a 'strategic priority in all of the areas' visited.

The Inspectors were positive about YOS staff's commitment, knowledge and training. YOSs were praised for the quality of OCD work ('good and effective'), with many of the schemes 'exceeding the minimum requirements of the statutory and recommended national frameworks'.

The Report identified some issues with the assessment tool used by YOSs but overall found that 'YOSs generally did the right things with children once they had the opportunity to work with them', and the Inspectors highlighted 'obvious' signs of progress in many cases inspected.

Engagement by children was found to be variable, but those YOSs (like S Glos) that focussed on meeting children and assessing in advance were found to have achieved 'much greater engagement'. The Report encouraged more work on understanding how successful OCD processes are at diverting children away from the criminal justice system. Overall the Report found that 'YOSs were generally doing a good job to help those children they worked with avoid offending; but with improved planning and assessment, and more attention to the views of the child, this work could be better still'.



Frontline Intelligence

Training Evaluation

The Quality Assurance Plan includes these two key measures:

- ✓ Immediate customer feedback
- ✓ Impact-evaluation: all delegates are invited to give feedback on how training has changed their practice/confidence, three months after attending the course

Immediate customer feedback:

This data comes from forms completed by delegates at the end of the range of inter-agency courses. These forms are “bespoke” to each training course: with a number of questions specifically linked to the learning outcomes for each course. Nevertheless, it is possible to combine the overall results for certain themes which shows that across the year:

Learning Outcomes:

92.5% of delegates reported that the **specific learning outcomes** for the course they had attended had been met, either Fully or Mostly. 51% = fully achieved in terms of their own learning needs, 41.5% = mostly achieved.

Confidence Levels:

96% of delegates reported they felt they were now at an above average or high level in terms of their **confidence to apply their knowledge** post-course; 73% of people gave the highest rating possible for this measure.

The Course Trainer:

98% responded that the trainer for their course demonstrated an above average or high level in terms of: **knowledge of the subject**, **responsiveness to their learning needs** and having the **right delivery style**; 86% of course attendees gave the highest rating possible for these measures.

This data demonstrates that course participants continue to feel that the overall quality of inter-agency training delivery is very high.

I will – be more confident about making referrals

I will - record accurately and make sure the child's voice is heard

I will - Be more mindful of the impact of Domestic Abuse on the victims and children as well as their responses towards services and perpetrators

Impact Evaluation

Three months after attending training delegates are notified that the LSCB would like them to complete a brief questionnaire to help understand the extent to which learning is being transferred into practice. Response levels from course participants prepared to give feedback in this way are now averaging around 10% of delegates. This is increasing gradually and shows this follow-up process is beginning to become more embedded in the learning culture locally.



A summary of this data through 2017-18:

To what extent has your knowledge increased? (percentage of respondents)	No increase: 1% Very little increase: 5% Some increase: 32% Quite a lot of increase: 48% Significant increase: 14%
To what extent has your confidence to do your job improved? (percentage of respondents)	No improvement: 2% Hardly any improvement: 9% Some improvement: 41 % Quite a lot of improvement: 36% Significant improvement: 12%

Learning & Improvement

As a result of the training, I have made sure I make a note on our online safeguarding system more often than I previously did and also made sure I delivered that message to staff so that all incidents and concerns are logged."
(Primary School Teacher)

I looked at my safeguarding policy and added some information, I have a greater and better knowledge of the signs and symptoms to look out for.
(Childminder)

Have had a meeting since to discuss safe guarding training for volunteers and as a result I have modified the safeguarding documents
(FYPS Worker, Local Authority)

Practitioner Forum

During 2017-18 the practitioner forum was launched. A multi-agency group of 18 practitioners have met three times, and this has led to a rich source of learning for the board, listening to the voices of professionals, and effectively linking frontline practice to the work of the board.

Could you tell the Safeguarding Board how it is for you and your colleagues day to day?

Do you work with children, young people or parents?

Can you be part of our learning, development and quality assurance systems?

Would you like to help things improve?

Do you have views about improving practice so we make children safer and support parents



Learning & Improvement

The meetings are chaired by different agencies, and have so far been chaired by Health, Social care and Police. A significant piece of work was undertaken by the forum, in the form of a practitioner survey. Each member gave a copy of the survey to three practitioners in a variety of roles to gauge practitioner knowledge and understanding about CSE and the board and their views about safeguarding in South Gloucestershire. The results of this survey have been reproduced in full in Appendix 7. The report was discussed at the full board in October 2017. Board members responded directly to the practitioner survey using a 'You said, we did' format. Minutes of each Practitioner Forum are circulated to board members via the Board Manager Bulletin.

I DIDN'T THINK I WOULD BE THE RIGHT PERSON TO ATTEND, BUT ACTUALLY I FOUND THE FORUM REALLY INTERESTING AND HAD A LOT TO ADD'

Attendee at the first forum

Training for Community Groups and Night Time Economy



The safeguarding board commissioned a training provider, Safe in Your Hands, to deliver child protection training to people who work and volunteer in community, church and sporting groups within South Gloucestershire. 157 people were trained. Feedback included

I have attended many training sessions and consider this to be one of the best. Given it was free this was an excellent and valuable service

Delegate from Incredible Kids

Many thanks: difficult subject made very accessible

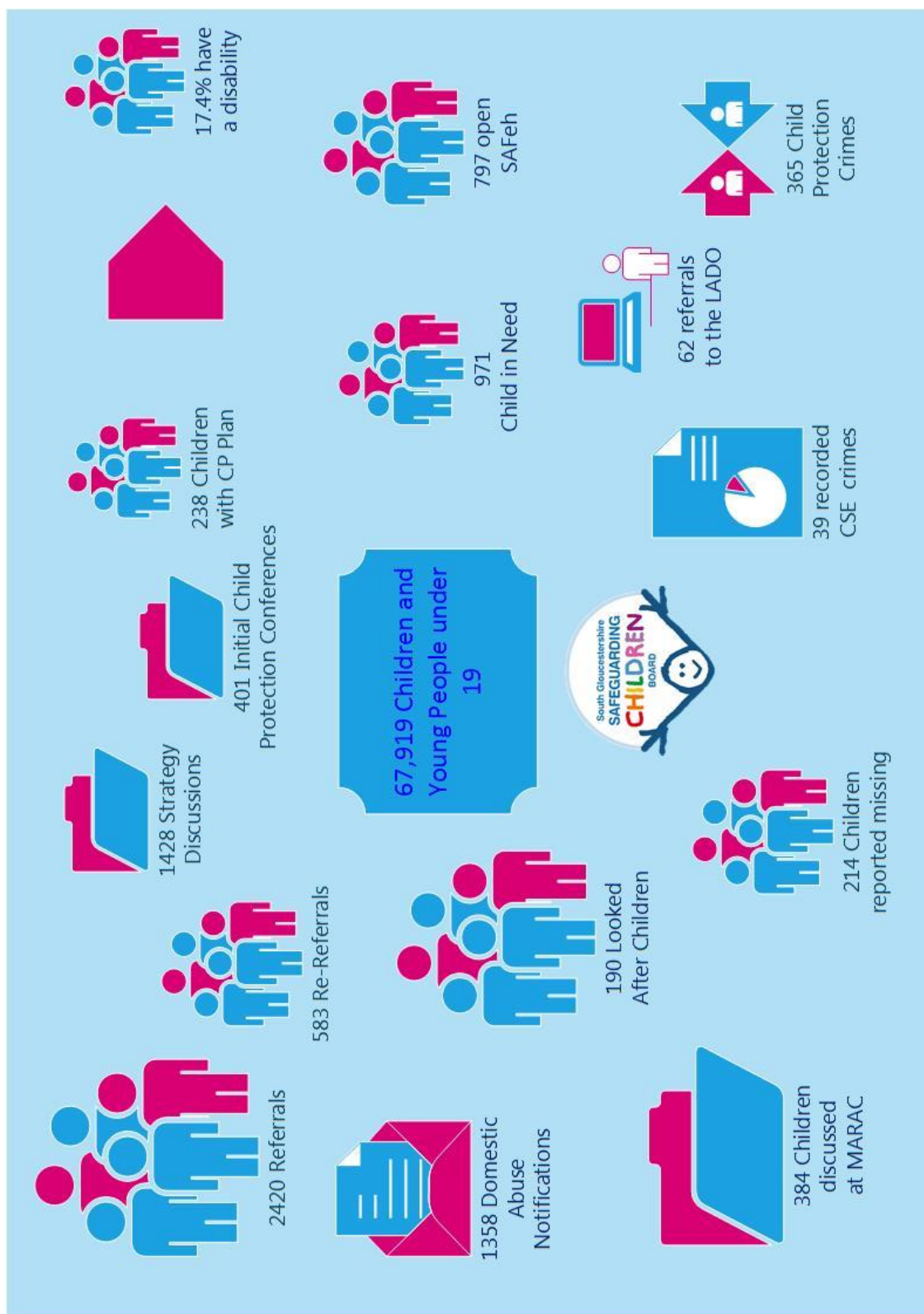
Christ the Rock Church

Very well delivered

Dragon Tang Soo Do Martial Arts

The same training provider was also commissioned to provide training to people working in the night time economy. A further 106 people were trained, particularly in how to spot the signs of sexual exploitation.

Performance Data



Learning & Improvement



Auditing

Section 11 Auditing

Section 11 of the Children Act 2004 place duties on a range of organisations and individuals to ensure their functions and any services that they contract out to others, are discharged having regard to the need to safeguard and promote the welfare of children.

In South Gloucestershire the Section 11 Audit for 2017-18 was undertaken across four local safeguarding children board areas and took the form of an interagency walkabout. The LSCBs that collaborated for this audit were South Gloucestershire, Bristol, Bath & North East Somerset and North Somerset.

Organisations that took part across the region:

Avon Fire & Rescue	Clinical Commissioning Group
Avon & Wiltshire Mental Health Partnership (AWP)	Weston Area Health Trust
Youth Offending Service (YOS)	Barnardo's
North Somerset Community Partnership	Royal United Hospital (RUH)
Avon & Somerset Constabulary	National Probation Service
Sirona Care & Health	University Hospitals Bristol (UHB)

The board manager worked with members of the board from different agencies to complete the walkabouts. The walkabouts involved talking to a variety of practitioners and managers from the organisations and asking questions from an agreed template to be able to gauge safeguarding effectiveness and practitioner knowledge of key safeguarding information. The themes for the questions were inter agency working and information sharing, chosen from responses given in the 2016-17 section 11 audit questionnaires. This method proved to be a highly successful peer review and reports were delivered to each of the four boards taking part.

Identified themes for learning included:

- 🔑 Lack of knowledge of the South West Child Protection Procedures across organisations.
 - 💡 The SGSCB have begun to address this by providing advertising for organisations to use to promote the procedures and promotion through the SGSCB Twitter account
- 🔑 Strengths identified in supervision for practitioners and in levels of training
- 🔑 Varied knowledge about the work of the board, and understanding about multi-agency and single agency policies
- 🔑 Better dissemination of learning from Serious Case Reviews needed
 - 💡 The SGSCB provides 'bite size' learning briefs quarterly to help share learning from Serious Case Reviews nationally that board members are given to disseminate within their organisations
- 🔑 Good knowledge and understanding about reporting concerns



Multi-Agency Auditing

The Quality Assurance subgroup of South Gloucestershire Safeguarding Children Board (SGSCB) conducts quarterly thematic multi-agency deep dive case audits. During Quarter One, with the agreement of the independent chair the sub group did not conduct an audit this year.

For 2017-18 these were:

Child in Need Where Domestic Abuse is a Feature

A deep dive audit of four children who were children in need where domestic abuse is a feature during the preceding 12 months was conducted by organisations. The purpose of the audit was to assess the effectiveness of the multi-agency response to these children in order to establish whether organisations have implemented a robust and consistent response in line with statutory and best practice guidance, SGSCB policies and procedures. This audit included information given by families for the purposes of the audit.

The audit also looked for evidence of:

- ✓ Understanding of the impact of domestic abuse on children
- ✓ Use of the DASH Risk Assessment tool
- ✓ Management oversight of the case
- ✓ Work with the perpetrator

Themes & Conclusions

The audit team identified that the four reviews of case files held the potential to shed light on particular areas of practice across the child protection system in South Gloucestershire.

Finding One	The 'Voice of the Child' is missing from case notes across agencies
Finding Two	Case records demonstrate a lack of professional rationale and judgement about cumulative effects of Domestic Abuse
Finding Three	Families are having to retell their stories over and over to different workers.
Finding Four	Information is not being consistently shared about Domestic Abuse with School Nurses
Finding Five	Professional curiosity is not always evident and there is a lack of understanding of the impact of witnessing DA on children
Finding Six	Lack of Child in Need meeting minutes evident in case files across agencies. No challenge as to where they are.

Children aged 7 years plus, subject of a CP plan with a category of neglect

A deep dive audit of four children who were children subject of a Child Protection plan with a category of neglect during the preceding 12 months was conducted by organisations.

The purpose of the audit was to assess the effectiveness of the multi-agency response to these children in order to establish whether organisations have



implemented a robust and consistent response in line with statutory and best practice guidance, SGSCB policies and procedures.

The audit also looked for evidence of:

- ✓ Use of the SGSCB Neglect Toolkit
- ✓ Meetings resulting in robust SMART plans
- ✓ Engagement with the child at all stages
- ✓ Management oversight of the case

Themes and Conclusions

The audit team identified that the four reviews of case files held the potential to shed light on particular areas of practice across the child protection system in South Gloucestershire

Finding One	There needs to be a URGENT action for social care to improve the communication with GPs and other agencies in notifying of Child protection concerns and requesting information for conference reports. In this audit no GPs were contacted and there were inconsistent responses for other agencies
Finding Two	All agencies need to raise awareness of the Neglect toolkit and ensure if the toolkit is used it that it is documented
Finding Three	Contact needs to made with Bristol LSCB and ask them to review one of the neglect cases we had reviewed to consider their actions in protection planning
Finding Four	The voice of the child was not consistently recorded
Finding Five	In two of the cases the mother had died, this raises a question about how well equipped are we to deal with fathers needs

Single Agency Auditing

During 2017-18 single agency audits were collated by the quality assurance subgroup, these are reported to the board in the performance report each quarter.

Summaries of single agency audits are included below:

North Bristol  **North Bristol Trust**
NHS Trust

Audit to establish 'Does the Engagement in Maternity Service Improve for Vulnerable Women when Continuity of carer is offered'

For the purpose of this audit the Specialist Midwife collected data retrospectively from the maternity records from those identified as Vulnerable Women over a 6 month period

Findings include:

- 🔑 This audit shows that engagement in maternity service does improve for vulnerable women when continuity of carer is offered.



Learning & Improvement

- 🔑 Whilst this sample (24 women) is small, these findings are supported by NHS England Better Births 2017 who state “All Women should have continuity in the person who is caring for them, their midwife and, where appropriate, their obstetrician.
- 🔑 Women preferred being cared for by one midwife or a small team throughout their pregnancy and postnatal period.

Recommendations include:

- 💡 The Specialist Midwife will communicate regularly with the community midwife to introduce her role and will continue to see the women in antenatal clinic.
- 💡 It is important to ensure a positive relationship is achieved between the woman and her Community Midwife for the postnatal period.



Barnardo's

- ✓ Safeguarding Audit undertaken to look at:
- ✓ Escalation under LSCB Processes
- ✓ File sampling to check records are in line with policy
- ✓ Checking supervision records to ensure safeguarding is a standing item
- ✓ HR checks to ensure mandatory training is up to date
- ✓ Face to face discussions to ensure staff safeguarding understanding

Key Findings included:

- 🔑 Good evidence of management oversight in files
- 🔑 Safeguarding embedded into team functioning
- 🔑 Training requirements are compliant and up to date
- 🔑 Safeguarding features highly in workers thinking
- 🔑 Good knowledge evident of processes to follow



Young People's Drug and Alcohol Service

Theme of Audit: Quality of Assessments

22 cases were audited and established that safeguarding concerns had been handled well with appropriate information sharing, good attendance at multi-agency meetings and consistent contact with the young people and families during times of higher risk. Positive relationships across teams were well established particularly with the specialist service in Bristol and the FYPS team making decision making effective.

- 🔑 Substance use specialists are having regular 1:1 supervision & peer supervision
- 🔑 They are completing assessments, care plans and gaining consent at the onset of treatment.
- 🔑 In some cases notes were detailed and comprehensively showed inter-agency working and content of sessions. Other case notes lacked detail and did not provide sufficient information around content of sessions or outcomes.
- 🔑 There was evidence of good involvement with family members providing additional support around risk taking behaviours.



- 🔑 Signs of Safety is consistently used and evidenced when completing assessments.
- 🔑 Social Workers refer to research when completing assessments



Public Health

South Gloucestershire Public Health commissions pharmacies to provide free emergency contraception to young women aged 24 and under. The service includes signposting to sexual health professionals for both emergency intrauterine devices where appropriate and for the full range of contraception methods.

This Audit was completed on Tuesday 5th December 2017. It is based on the 301 consultations, of which 294 resulted in the supply of Levonorgestrel emergency hormonal contraception (EHC) covering the period 25/07/2017 and 28/11/2017

The outcomes from this Audit have shown that there are areas we can address to improve the quality of the service and provide greater assurance of compliance by those pharmacists delivering the service.

The Audit has revealed some areas where some improvements can be made quickly through simple administrative tasks. These include:

- 🔑 Improving rates of compliance via a simple exercise of phoning pharmacists and asking them to enter missing date of completion details.
- 🔑 Improving compliance with criteria 6 through emailing personalised reminders to individual pharmacists.
- 🔑 Better tracking of patient signposting/referral in relation to reported 'risk' behaviour



University Hospital Bristol (UHB)

Safeguarding Audit Activity reported as follows:

- ✓ Safeguarding Training is of a high standard. Audit Completed - Peer review of training has been completed Sept 2017 and reported internally and to Bristol CCG.
- ✓ Child and Baby abduction policies are embedded in practice (St Michaels and Children's Hospital) Dry run of policy undertaken annually. Monitored internally and reported through Operational Group
- ✓ Staff are aware of the indicators of Domestic Violence and are aware of actions to be taken. Review undertaken as part of 'safeguarding awareness week' in Nov 2017.
- ✓ Adult services recognise vulnerable young people (16 & 17 year olds) and view them as children. Requirement for audit has updated to reflect plans to develop and implement Safeguarding Risk Assessment as part of 'Admission Screening Tool' to be used in adult areas. Included in Safeguarding work plan for 2018/19.
- ✓ Maternity Safeguarding standards: fathers name and occupation and DOB is recorded in maternal notes. Audit completed Sept 2017.
- ✓ 100% of Young people have CSE assessment completed in Sexual health / unity. Audit completed March 2018.

Learning & Improvement

Child Death Overview Panel (CDOP)

There is no footprint too small to leave an imprint on this world. Whether a life is measured in minutes, months or years, the loss of a child is profoundly devastating. The professional care, kindness and dignity we afford to these children, their families and those close to them is at the heart of the Child Death Overview Panel's purpose and endeavour.

Sally Lewis, Chair of WoE CDOP

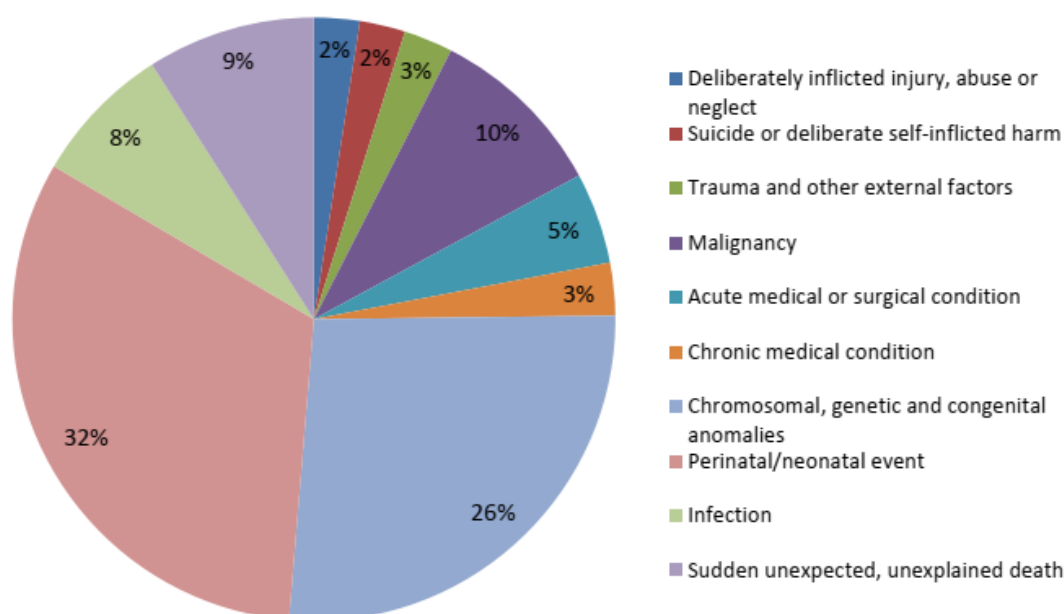
Since April 2008, Local Safeguarding Children Boards in England have had a statutory responsibility for child death review processes. The relevant legislation is enshrined within the Children Act 2004, and applies to all young people under the age of 18 years. The processes to be followed when a child dies are currently outlined in *Working Together to Safeguard Children 2015*.

The overall purpose of the child death review process is to understand how and why children die, to put into place interventions to protect other children and to prevent future deaths.

In the area of the former county of Avon, four neighbouring LSCBs (Bristol, North Somerset, South Gloucestershire and Bath & North East Somerset) have come together to form a single West of England (WoE) CDOP.

532 child deaths were notified to the West of England Child Death Enquiries Office between 1st April 2013 and 31st March 2018. Of the 103 notified deaths in 2017-18, 16 were resident in South Gloucestershire.

Notifications by Category of Death over the period 2013-18



Themes emerging from aggregate view of cases at CDOP during the year 2017-18

Themes identified from review of deaths by suicide: The golden thread through this group of deaths was education. Press intrusion following inquests leads to increased family stress. Previous suicide in the family is associated with an increased incidence in suicide in children. The child's friends are often more aware of the child's true feelings and intentions than family or professionals. This highlighted the necessity for emotional support within education settings to ensure children are confident to signpost friends appropriately or disclose concerns to school staff.

Recognition of exceptional care being provided to families: This year CDOP commended several teams on the outstanding care provided to a child, often in exceptional or challenging circumstances. This included bespoke planning to meet highly individualised needs, ensuring time is made for parents to hold their baby before emergency surgery and out of hospital resuscitation for children with complex medical needs.

Choice of place of death for families with children on a palliative care pathway: CDOP has reviewed a large number of cases of children with palliative care needs where a wish to die at home was not fulfilled because of a lack of community based professionals.

Challenges in reviewing deaths of 16-17 year olds: Following the CDR process for children in this age group is challenging because the process for adults is different and staff are not always familiar with the process. There is often a delay in notifying the multi-agency teams for rapid response. Four training sessions have been provided for police collision investigators on the child death review process.

Inadequate communication about the news of a child's death to professionals: A number of cases have been reviewed where the child's school or GP had not been notified about a child's death through the appropriate channels.

Achievements and Future Priorities

In September 2017 the annual report was presented as a single event for combined LSCBs and stakeholders. This was well received.

Shared pathways have been agreed with other processes such as Serious Case Reviews and the Learning Disability Mortality Review Programme (LeDer) to ensure optimal collaborative learning.

As a sub group of the LSCBs CDOP was subject to Ofsted inspection of BANES and North Somerset this year

In the coming year CDOP will need to implement the new national guidance including potential reconfiguration. However the WoE CDOP is already reviewing the recommended number of 60 -120 deaths per year.

Vinney Green Secure Children's Home

"Young People say they feel safe. They speak positively of staff and live in a home where their individual needs guide the care they receive"

Ofsted: Jan 2017

Section 45 of the Children's Homes (England) Regulations 2015 states that a Quality of Care Review has to take place every 6 months. Therefore instead of an annual report there are now 6 monthly reports looking at the quality of care provided to young people who live at Vinney Green.

Vinney Green Secure Unit, is a 24 bedded Secure Children's Home offering places to young people of both genders between the ages of 10 and 18 years old. For the period covered in this report, all of the places were contracted to the Youth Justice Board, however throughout this period beds have very occasionally been released by the Youth Justice Board for the Welfare market and therefore the young people cared for at Vinney Green Secure Unit during the last 6 months have been a mixture of young people secured either via the Youth Justice route or through the Family Courts. A small number of young people have also stayed with us briefly under the Police and Criminal Evidence Act (PACE) 1984.



Vinney Green

Voice of the child

The Unit has a complaints, comments and compliments process that the young people use. This process is accessible to all young people and works well.

The number of complaints during the 6 months is 25. Of these complaints, 7 were deemed to have been justified (2) or partially justified (5). Proportionately, 28% of complaints are therefore considered to be upheld. However every complaint is viewed as valid and the explanation made to young people is often sufficient for them to be satisfied with the response.

Was Complaint Justified?	Number	Type of complaint	Number
Yes	2	Other Service User	4
No	18	Unit Policy	4
Partially	5	Service Provided	10
		Actions of Member of Staff	7

If young people are not happy with the response to their complaint or if they would like help with writing their complaint, the advocate from Coram Voice comes in weekly and speaks with each young person. There is ongoing discussion between the Coram Voice Representative and the Head of Secure & Emergency Services through a communications log. The Regulation 44 inspector comments that this system is well used and all complaints are responded to in a timely manner and the issues are taken seriously.

Young people also write comments and compliments to staff, during this period there have been 9 comments and 2 compliments.

Education

Data shows that young people at Vinney Green make significantly better progress than the national expectations. We consider this to be due to the small class sizes allowing education staff to focus on each individuals educational needs. We believe this is due to the small class group (1:4) max and the quality of teaching.

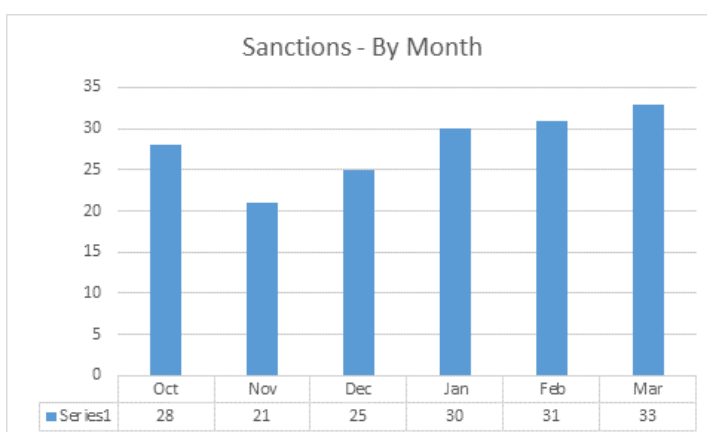
Length of stay	National expected progress in QCA points	National good progress in QCA points	Maths Vinney Green QCA points	English Vinney Green national QCA points
2-8 weeks	0.6	0.8	N/A	N/A
9-24 weeks	1.2	1.6	3	3.1
25-52 weeks	1.8	2.4	4.4	5.6
> 1 year	3.6	4.8	6	10.7

Vinney Green

Vocational studies, mobility's to places of educational value and work experience opportunities are imbedded into the Units routine.

Behaviour Management

There has been a new rewards and incentive scheme developed during the last 6 months and this is still in the process of being reviewed and adapted. The scheme focuses on positives as well as behavioural issues, to better help us meet the young person's emotional needs. Sanctions fluctuate depending on the mix of young people and their individual needs, where possible we look to resolve issues without sanctions, but this has to be balanced with the need to understand consequences, within the unit and for resettlement when they young



person leaves us. In the last 6 months sanctions have consistently been below 35 each month.

The Rewards and Incentive scheme is based on the following ethos:-

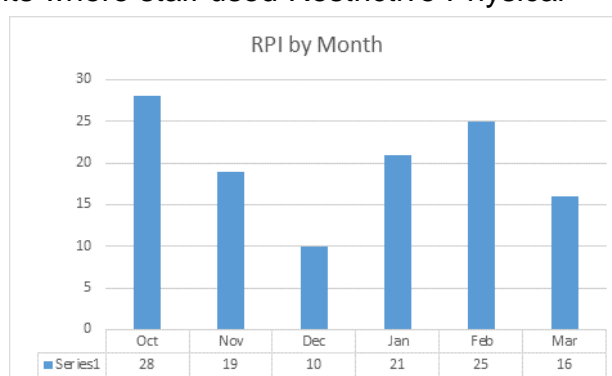
1. We expect young people to treat each other with care and respect.
This means;
 - i. Accepting each other's differences
 - ii. Not to bully or threaten each other
 - iii. Not to swear or call each other names
 - iv. Not to use violence or aggression
2. We expect young people to treat all staff and visitors with care and respect.
This means;
 - i. Not swearing or using abusive or threatening language
 - ii. Not to use violent or aggressive behaviour
 - iii. To listen to staff requests and to do as they ask as quickly as possible.
3. To show care and respect for where you are living.
This means;
 - i. You should not cause damage to the unit or unit property
 - ii. You should not cause damage to the property of other young people
 - iii. You should not write or draw graffiti in the unit
4. We expect all young people to attend education, group work, key work, enriched activities and any other sessions or appointments agreed in your care plan.

Safeguarding

Safeguarding records are kept at the Unit, the unit has a robust professional relationship with the LA LADO. All incidents where staff used Restrictive Physical Intervention (RPI) as a last resort is recorded on CCTV and viewed by a senior manager, LADO and YCS monitor. Recorded information from the previous day and night are shared at the morning meetings to ensure young people are kept safe.

RPI's fluctuate each month depending on the mix of young people and their individual needs, the trend from the previous 6 months is downwards and we look to reduce this further. However with such small numbers (24 young people) it only takes one young person who is very volatile to skew the figures.

Vinney Green has an active improvement and development plan that looks at all areas of the young people's care, this is overseen by South Gloucestershire Council via the supervisory process, the Youth Custody Service via the monitoring process and Ofsted via the inspection process.



Vinney Green

Child Injury Prevention Group (CHIP)

The vision of this group is to reduce the risk of injury to children aged 0-19 in South Gloucestershire whilst encouraging them to lead active and fulfilling lives. The group is multi-agency, including representation from South Gloucestershire Council's



Safeguarding Manager, Public Health and Wellbeing division, Trading Standards, Early Years, Road Safety, Children's Centres, Health Visiting, Avon Fire & Rescue Service and many more, all working collaboratively to reduce childhood injury by improving children's safety within their environment and encouraging safe behaviours.

As injury remains the most frequent cause of death among children a key priority for the group in 2017/18 was the development of Injury prevention training for practitioners. In March 18, an online training programme for practitioners working with 0-5 year olds and their families was launched, enabling key messages and knowledge to be shared directly with families. This was promoted with partners throughout the group's networks.

Over this year a number of objectives outlined in the CHIP plan have been delivered such as raising the awareness of injury during Child Safety Week and Burns Awareness Day. Both of these events were promoted using Social Media achieving over 17,000 contacts for child safety week and 18,700 for Burns Awareness Day including comments, likes and shares. CHIP newsletters continue to be published and disseminated to health and child care professionals every 6 months, enabling further awareness raising and timely messages to be shared. Working in partnership has added considerable value, for example, members of the group deliver sessions on the specialist areas of children's burns and road safety as part of the baby & me courses provided in children's centres. Also, Car Seat Safety events, road safety roadshows and demonstrations in schools have been run by Road Safety and Avon Fire & Rescue Service.

This group aims to address health inequalities caused by injury through the delivery of the Home Safety Equipment scheme (criteria based). This scheme provides safety gates; window, door and cupboard locks; fireguards and blind cord cleats for those families that evidence tells us are more at risk of injury. Referral is made by Health Visitors and Children's Centres to the Public Health and Wellbeing division for eligible families and appropriate equipment is fitted.

The CHIP group meets quarterly, if you would like to become a member or for more information please contact Amanda Preddy on 01454 864672 or amanda.preddy@southglos.gov.uk



Priorities for the Coming Year

*Our vision for safeguarding in South Gloucestershire is that children and adults thrive, reach their full potential and live their lives safe from harm (violence, abuse, neglect, exploitation). To achieve this vision we will work together and with local communities to improve outcomes and to ensure South Gloucestershire is a place where safeguarding is everybody's business
(SGSCB & SGSAB Vision 2016)*



Priorities 2017-2018

What You Need to Know



www.southglos.gov.uk/safeguarding

Safeguarding Children is Everyone's Responsibility

If in Any Doubt Speak Out



Call South Gloucestershire Council on **01454 866000**

Or **01454 615165** out of hours and at weekends

If a child is in immediate danger – please call 999 and ask for police assistance

Children and Young People

- ✓ Nothing is more important than making sure you are SAFE and well cared for
- ✓ As adults sometimes we think we always know best...we don't...and that's why your voice is so important
- ✓ This is about you and we want to know more about how you think children and young people can be better protected
- ✓ We want to talk to you more often and we want to know the best way to do this...please help
- ✓ If you are worried about your own safety or that of a friend, speak to a professional you trust or call South Gloucestershire Council on **01454 866000** or speak to ChildLine On **0800 1111**
- ✓ If you or a friend are in immediate danger, please call **999** and ask for police assistance

childline

ONLINE, ON THE PHONE, ANYTIME

Parents and Carers

- ✓ Public agencies are there to support you and prevent any problems you are having getting worse...don't be afraid to ask for help
- ✓ Tell us what works and what doesn't when professionals are trying to help you and your children
- ✓ Make sure you know about the best way to protect your child and take time understand some of the risks they can face
- ✓ You'll never get ahead of your child when it comes to understanding social media and IT – but make yourself aware of the risks that children and young people can face at www.thinkuknow.co.uk/parents



The Community

- ✓ We all have a role to play in protecting children and young people. All children have a right to be SAFE and should be PROTECTED from all forms of abuse and neglect.



You don't have to be absolutely certain about whether a child is being abused. If you have a feeling that something's not right talk to South Gloucestershire Council on 01454 866000 (01454 615165 out of hours and weekends) If a child is in immediate danger call 999 and ask for police assistance

- ✓ Spotting the signs a child is being abused or neglected can be difficult. On our website we have highlighted some of the signs to look out for <http://sites.southglos.gov.uk/safeguarding/category/children/i-am-a-parentcarer/>
- ✓ If you are concerned about a child, you should report it. Information is usually gathered from many sources and individual reports form one part of a bigger picture
- ✓ In 2014/15 more than 400,000 children were supported because someone noticed they needed help

Frontline Staff and Volunteers Working with Children, Young People and their Families

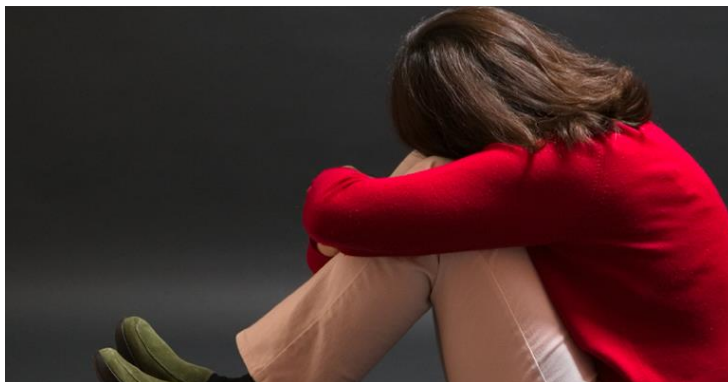
- ✓ Ensure that the safeguarding and welfare of the child is central to all that we do and is of the highest quality
- ✓ Families in South Gloucestershire should be treated with respect, courtesy and honesty
- ✓ Families should receive a consistent service. Be proactive in identifying and responding to the changing needs of our local community
- ✓ Be familiar with SGSCB *A Child's Journey of Need* threshold document and use when necessary
- ✓ Ensure inspirational, confident, ambitious and influential leadership that contributes to positively changing the lives of local children
- ✓ Ensure you undertake effective and continuous learning that improves your practice
- ✓ All workers should engage in professional challenge when required
- ✓ Use your representative on SGSCB to make sure your voice is heard
- ✓ Professionals should email accessandresponse@southglos.gov.uk*



*Do not send personal data via an unsecured email. If required, send a request for access to the secure portal to this address before proceeding.

Local Politicians

- ✓ You are leaders in your local area. Do not underestimate the importance of your role in advocating for the most vulnerable children and making sure everyone takes their safeguarding responsibilities seriously
- ✓ Councillor Jon Hunt is the lead member for Children & Young People and has a key role in children's safeguarding – so does every other councillor
- ✓ You can be the eyes and ears of vulnerable children and families...Keep the protection of children in the front of your mind



Chief Executives and Directors

- ✓ You set the tone for the culture of your organisation. When you talk, people listen – talk about children and young people
- ✓ Your leadership is vital if children and young people are to be safeguarded
- ✓ Understand the capability and capacity of your front-line services to protect children and young people – make sure both are robust
- ✓ Ensure your workforce attend relevant SGSCB training courses and learning events
- ✓ Ensure your agency contributes to the work of the SGSCB and give this the highest priority. Be Section 11 compliant
- ✓ Advise the SGSCB of any reorganisational restructures and how these might affect your capacity to safeguard children and young people

The Police

- ✓ Robustly pursue offenders and disrupt their attempts to abuse children
- ✓ Ensure officers and police staff have the opportunity to train with their colleagues in partner agencies
- ✓ Ensure the voices of all child victims are heard, particularly in relation to listening to evidence where children disclose abuse
- ✓ Ensure a strong focus on MAPPA & MARAC arrangements



Headteachers and School Governors

- ✓ Ensure your school/academy/educational establishment is compliant with *Keeping Children Safe In Education* (DfE 2015)
- ✓ You see children more than any other profession and develop some of the most meaningful relationships with them
- ✓ Keep engaged with the safeguarding process and continue to identify children who need early help and protection

Clinical Commissioning Groups

- ✓ CCGs in the health service have a key role in scrutinising the governance and planning across a range of organisations
- ✓ Discharge your safeguarding duties effectively and ensure that services are commissioned for the most vulnerable children

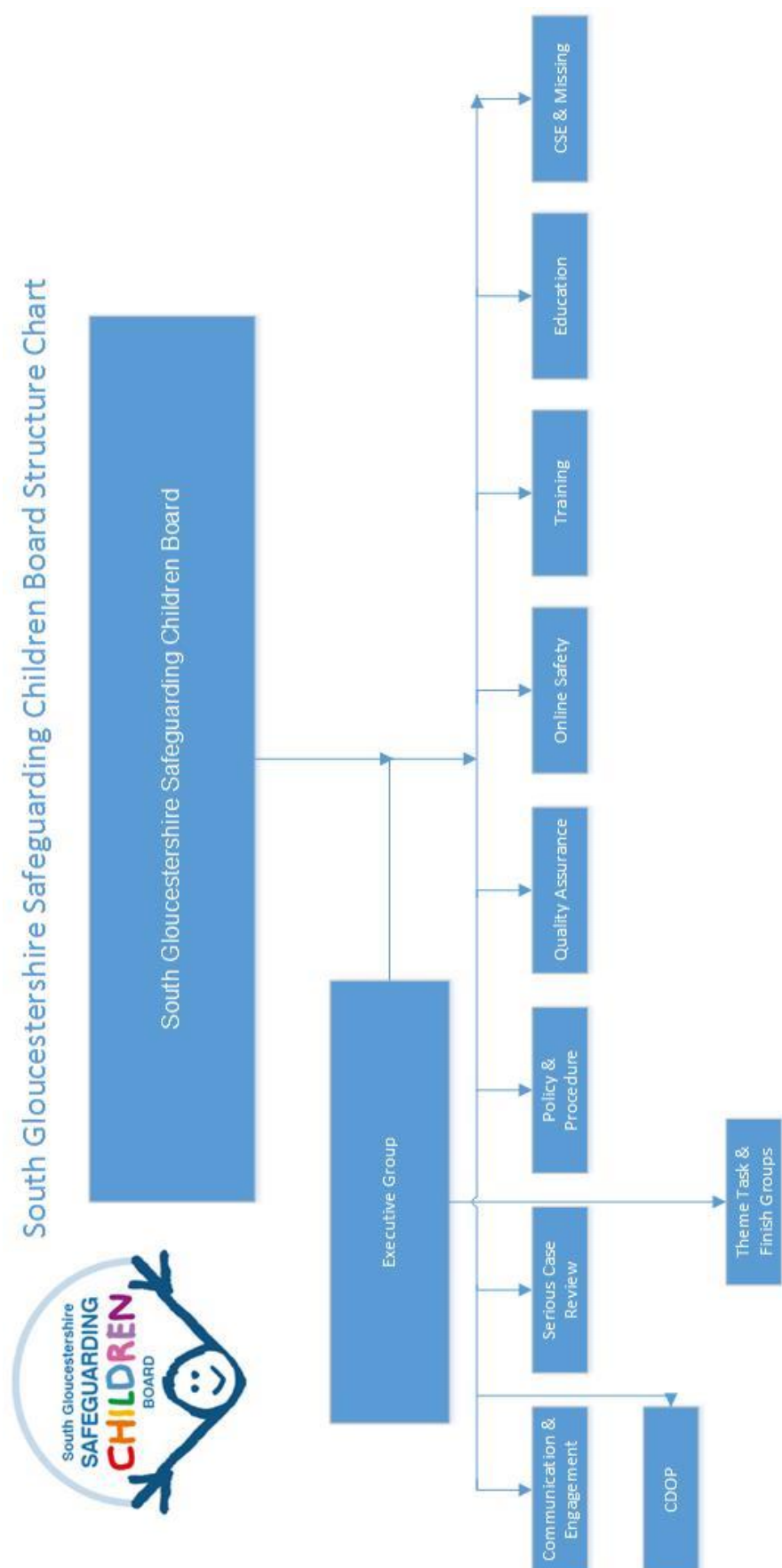


The Local Media

- ✓ Communicating the message that we all have a role to play in protecting children from abuse is crucial – you can help us to do this positively
- ✓ With your help, we can create a new social norm around reporting and tackling the barriers that stop people taking action
- ✓ This could take the form of encouraging and reassuring people that we all have a role to play in protecting children from abuse, not leaving it to others to report and helping the public to understand the signs to spot

If in any doubt – speak out

Appendix One: SGSCB Structure Chart



Appendices

Appendix Two: Constitution SGSCB

South Gloucestershire Safeguarding Children Board

Constitution

1. Purpose and Objectives

- 1.1 The South Gloucestershire Safeguarding Children Board (SGSCB) is the statutory multi-agency body established by South Gloucestershire Council in accordance with the Children Act 2004 and the statutory guidance set out in Working Together to Safeguard Children 2015.
- 1.2 The core objectives of the Board as set out in the Children Act 2004 (S14) are:
 - to coordinate what is done by each person or body represented on the Board for the purposes of safeguarding and promoting the welfare of children in the area; and
 - to ensure the effectiveness of what is done by each such person or body for those purposes.
- 1.3 In order to fulfil its statutory function under regulation 5 of the Local Safeguarding Children Boards Regulations 2006 an LSCB should use data and, as a minimum, should:
 - assess the effectiveness of the help being provided to children and families, including early help;
 - assess whether LSCB partners are fulfilling their statutory obligations set out in chapter 3 of Working Together 2015;
 - quality assure practice, including through joint audits of case files involving practitioners and identifying lessons to be learned; and
 - monitor and evaluate the effectiveness of training, including multi-agency training, to safeguard and promote the welfare of children.
- 1.4 The Board must work closely with the Children's Trust Board and the Health and Wellbeing Board and must hold these bodies to account in driving forward improvements in the safeguarding of children and young people and the promotion of their welfare.
- 1.5 The Board will maintain an awareness of the Prevent programme and will:
 - ensure Prevent requirements to identify and respond to people at risk of being drawn into terrorism are appropriately and proportionately built into local safeguarding processes.
 - periodically review local activity and outcomes with the Prevent Group to improve the understanding and awareness of local risks.

2. Terms of Reference

- 2.1 To develop policies and procedures for safeguarding and promoting the welfare of children and young people in South Gloucestershire, with particular reference to:
 - action to be taken where there are concerns about a child's safety or welfare, including thresholds for identification of need and intervention;
 - training of persons who work with children or are in services affecting the safety and welfare of children;
 - the recruitment and supervision of persons who work with children;
 - investigation of allegations concerning persons who work with children;
 - the safety and welfare of children and young people who are privately fostered;
 - co-operation with neighbouring authorities and their Safeguarding Children Board partners;
 - the development of local protocols for matters such as the resolution of professional differences of views and for participation in child protection and other related conferences;

- 2.2 To communicate to persons and bodies in the area of the authority the need to safeguard and promote the welfare of children, raising their awareness of how this can best be done and encouraging them to do so.
 - 2.3 To monitor and evaluate the effectiveness of what is done by the Local Authority and Board partners, both as individual agencies and collectively, to safeguard and promote the welfare of children and young people and to advise them on ways to improve their practice, including:
 - the development of self-evaluation tools and monitoring their use and effectiveness;
 - the development and use of quality audit processes
 - the scrutiny of physical restraint in secure estate settings;
 - the development of means for challenging practice to drive forward improvements;
 - the scrutiny of performance data
 - 2.4 To produce and submit to the Children's Trust Board and the Health and Wellbeing Board an annual report on the effectiveness of safeguarding and promoting the welfare of children in the local area which:
 - provides a rigorous and transparent assessment of the performance and effectiveness of local services;
 - identifies areas of weakness, the causes of those weaknesses and the action being taken to address them;
 - identifies other proposals for action;
 - provides lessons from reviews undertaken;
 - 2.5 To influence the planning and commissioning of services for children and young people in South Gloucestershire to ensure that they take safeguarding and promoting the welfare of children into account.
 - 2.6 To ensure that there are effective arrangements for collecting and analysing information about the deaths of all children in the area and specifically to identify:
 - Any case giving rise to the need for a review (regulation 5(1)(e))
 - any matters of concern affecting the safety and welfare of children in the area;
 - any wider public health or safety concerns arising from a particular death or from a pattern of deaths in that area;
 and to ensure there are effective arrangements for ensuring a co-ordinated response by the authority, their Board partners and other relevant persons to the unexpected death of a child.
 - 2.7 To undertake reviews of serious cases where abuse or neglect of a child is known or suspected, or where a child had died or has been seriously harmed and there is concern as to the way in which the Local Authority, the Board partners or other relevant persons have worked together to safeguard that child.
 - 2.8 To put in place arrangements to ensure that the voice of children and young people, families and the community are taken into account.
 - 2.9 To ensure lay members operate as full members of the Board.
 - 2.10 To maintain a local Learning and Improvement Framework, which is shared across local organisations who work with children and families, which enables them to be clear about their responsibilities, to learn from experience and improve services as a result.
 - 2.11 To undertake any other activity that the Board considers to be conducive to the achievement of its objectives.
3. Legal Status and Decision Making
 - 3.1 The SGSCB is a statutory body in its own right and will agree an annual business plan to guide its work.

- 3.2 The SGSCB will present an annual report to the Children's Trust Board and the Health and Wellbeing Board.
- 3.3 The SGSCB will establish such sub committees as are appropriate at any time and will review their operation annually. The Board may delegate decision making as appropriate to sub committees.
- 3.4 The SGSCB will scrutinise the Children and Young People Plan and any other relevant needs assessments and plans to ensure that the safeguarding and promotion of the welfare of children and young people are being appropriately addressed.
- 3.5 The SGSCB will be able to make recommendations as appropriate to the Children's Trust Board, the Health and Wellbeing Board and any other relevant decision making bodies regarding policy, practice and resources associated with the safeguarding of children and young people and the promotion of their welfare.
4. Membership
 - 4.1 The Board shall be chaired by a person who is independent of the partners represented on the Board and organisations which deliver services to children and young people in the area. The Chair will be appointed by the Chief Executive and a panel of partners and lay members and will be accountable to the Chief Executive. The period of office for the Chair will normally be three years. The Board shall also appoint a Vice Chair from within its membership, normally for a period of three years.
 - 4.2 The membership of the Board will include named representatives of all relevant agencies as set out in the Children Act 2004 and the statutory guidance Working Together 2015 as follows:
 - Independent Chair
 - Participant Observer Member – Executive Member for Children's Services South Gloucestershire Council
 - Director for Children Adults and Health, South Gloucestershire Council
 - Head of Integrated Services for Children and Young People, South Gloucestershire Council
 - Head of Safeguarding, South Gloucestershire Council
 - Safeguarding Policy and Practice Manager, South Gloucestershire Council
 - Representative of Avon and Somerset Constabulary as nominated by the District Police Commander
 - Director of Public Health, South Gloucestershire Council
 - Designated Nurse for Safeguarding Children
 - Designated Doctor for Safeguarding Children
 - Named GP for Safeguarding Children
 - Representatives of North Bristol and United Hospital Trusts and Avon and Wiltshire Mental Health Partnership Trust as nominated by the respective Chief Executives of the Trusts
 - Clinical Commissioning Group Nurse Director and Head of Quality and Safeguarding
 - NHS England, Director of Nursing and Quality
 - Representative of National Probation Service as nominated by the Chief Executive of the Service
 - Representative of Community Rehabilitation Company as nominated by the Chief Executive of the Service
 - Representative of CAFCASS as nominated by the Chief Executive of the Service
 - The Governor of Eastwood Park HMP or their nominated representative
 - Head of Vinney Green Secure Unit
 - South Gloucestershire Youth Offending Service Manager

- Head of Safer Stronger Communities, South Gloucestershire Council
- Representative of the main Housing Provider in South Gloucestershire as nominated by the Chief Executive of the Service
- Head of Legal, Democratic and Property Services, South Gloucestershire Council or his/her nominated representative
- 2 lay members appointed by the Board
- Representative of South Gloucestershire Primary and Special Schools as nominated by the Heads Executive
- Representative of South Gloucestershire Secondary Schools as nominated by the Secondary Heads Group
- Representative of Further Education as nominated by the Principals of Filton and City of Bristol Colleges
- Head of Education, Learning and Skills, South Gloucestershire Council
- At least one faith representative
- At least 2 Voluntary Sector representatives
- Representative of South West Ambulance Service
- Chairs of the SGSCB Sub Groups (if not members in another capacity)
- Representative from Sirona Care and Health

Associate Members

- Representative of the Crown Prosecution Service
- Representative of Avon Fire and Rescue Service

- 4.3 Board members will be able to nominate one substitute to attend meetings in his/her absence
- 4.4 The Board may co-opt other members as appropriate on the recommendation of the Executive Sub Committee.
- 4.5 Officers from the Board partners will be available to offer advice and guidance as required.

5. Sub Committees

- 5.1 In order to undertake the range of work which shall be reported on an annual basis to the full Board, the Board has identified the following sub groups:
 - The SGSCB Executive Sub Committee
 - The West of England Child Death Overview Panel
 - The SGSCB Serious Case Review Sub Group
 - The SGSCB Policy and Procedures Sub Group
 - The SGSCB Quality Assurance Sub Group
 - The SGSCB Training Sub Group
 - The SGSCB Online Safety Sub Group
 - The SGSCB Education Sub Group
 - The SGSCB Child Sexual Exploitation& Missing Sub Group
- 5.2 In addition, the Board may establish themed groups, some of which will operate on a task and finish basis. These groups are subject to annual review.
- 5.3 The SGSCB also has linkages to other groups established on a sub regional/regional basis, in particular the Avon and Somerset Consortium, co-ordinated by the Avon and Somerset Constabulary, and the South West Child Protection Shared Procedures Group.

6. Convening and Conducting Meetings

- 6.1 The Board shall meet at least four times per year with additional meetings and development days to be arranged as agreed by the Board.
 - 6.2 The Chair will be an independent person as described in 4.1 above.
 - 6.3 The Board should aim to reach its conclusions by consensus, but, in the absence of consensus on any matters requiring decision, the Chair shall have a casting vote.
 - 6.4 All members of the Board will be expected to sign the SGSCB Memorandum of Understanding confirming their acceptance of their responsibilities in respect of the Board and their own organisation.
 - 6.5 Secretariat and legal support will be provided by South Gloucestershire Council to include:
 - Co-ordination of agenda preparation;
 - Convening of meetings of the full Board, the Executive Sub Committee and any Serious Case Review Panels;
 - Publication of agenda and supporting papers at least five days prior to the meeting;
 - Taking of minutes;
 - Monitoring and progressing actions agreed by the Board.
 - 6.6 The meetings of the SGSCB are not open to the public.
 - 6.7 An annual record of attendance by organisation will be published and the Chair will raise any non attendance greater than 25% with the relevant organisation.
 - 6.8 Any dispute resolution will be undertaken in accordance with the policy for the Resolution of Professional Differences of Opinion adopted by the Board.
7. Funding
- 7.1 A specific pooled budget for the Board will be agreed each year and reported in the Annual Report and the Business Plan. It is expected that the statutory partners named in the Children Act 2004 will make a contribution to the pooled budget.
 - 7.2 In addition, both the statutory partners and other Board members will be expected to make a contribution in kind through their participation in Board and sub group meetings, and other activities arranged by the Board.

Appendix Three: Memorandum of Understanding



Memorandum of Understanding for Members of the South Gloucestershire Safeguarding Children Board

Context

Chapter 3 of the statutory guidance Working Together to Safeguard Children 2015 sets out the responsibilities of Local Safeguarding Children Boards and the statutory membership.

This includes the following statements in respect of members of an LSCB:

- 1) Members of an LSCB should be people with a strategic role in relation to safeguarding and promoting the welfare of children within their organisation. They should be able to:
 - speak for their organisation with authority;
 - commit their organisation on policy and practice matters; and
 - hold their own organisation to account and hold others to account.
- 2) All LSCB member organisations have an obligation to provide LSCBs with reliable resources (including finance) that enable the LSCB to be strong and effective. Members should share the financial responsibility for the LSCB in such a way that a disproportionate burden does not fall on a small number of partner agencies.

This Memorandum of Understanding sets out the South Gloucestershire Safeguarding Children Board's expectations for members. The members shall, for the purpose of this Memorandum of Understanding, include the organisation and the individual representing the organisation who are defined as Statutory Board Members and Member Organisations ('Board Member').

Each Board Member will agree to accept the following responsibilities which shall commence immediately and will thereafter work diligently in accordance with the terms of reference of the Board and the duties placed on each member of the Board and their employing organisation in accordance with 'Working Together to Safeguard Children 2015'.

Commitment to the Purpose and Objectives of the Board

In order for the Board to operate effectively, Members must be committed to the collective purpose, ethos and aims of the Board. This means to:

- 1) **Develop and deliver a Local Safeguarding Board in accordance with the range of roles and statutory functions as set out in the Children Act 2004 and Working Together to Safeguard Children 2015'.**
- 2) **Work effectively and efficiently so as to ensure the Board meets its statutory objectives which are to co-ordinate what is done by each person or body represented on the Board for the purposes of safeguarding and promoting the welfare of children in the area and to ensure the effectiveness of what is done by each such person or body for those purposes.**

This includes:

Appendices

- regular attendance at the Board and any sub groups
 - Completion of Section 11 Audits in a timely way
- 3) Support achievement of the priorities that have been agreed by the Board in its Business Plan.
 - 4) Ensure that confidential information is not shared beyond the Board without the permission of the chair.

Promote and Support the Objectives of the Local Safeguarding Board

In order to ensure the work of the Board is effective, each Board Member shall be a champion for safeguarding children and young people. This means that:

- 1) Each Member shall scrutinise vigorously the arrangements in place within their own organisation in respect of working with children and young people to ensure that the arrangements are fit for purpose, and be ready to share this with the Board when required.
- 2) Each Member shall take such steps as are necessary within their individual organisation to promote improved arrangements where they deem appropriate.
- 3) Each Member shall promote effective communication, both within their own organisation and with other partner organisations/agencies.
- 4) Each Member shall promote the work of the Board within their individual organisation and disseminate relevant documentation and information as appropriate so as to raise greater awareness of the issues relating to the safeguarding of children and young people amongst a wider community.

This includes:

- Contributing to and dissemination of Newsletters
- Regular promotion of learning and development events
- Dissemination of policies, research and learning from Case Reviews
- Promoting the Board website and use of South West Child Protection Procedures website.

This Memorandum of Understanding is signed by:

Name:

Organisation:

Signature

Date:

and received by the Head of Safeguarding

Name: Catherine Boyce

Date:

Signature

Appendices

Appendix Four: Board Membership & Attendance

Agency	Name	Role	Attendance <small>Includes predecessor where applicable</small>
Independent Chair	Amy Weir		100%
South Gloucestershire Council	Councillor Jon Hunt	Lead Member for Children & Young People	50%
	Lynn Gibbons	Public Health Consultant	50%
	Rachael Webb	Education Advisor (Early Years)	25%
	Catherine Boyce	Head of Safeguarding	75%
	Helean Hughes	Head of Education, Learning & Skills	100%
	Holly Magson	Workforce Development Advisor	100%
	Sonya Miller	Head of Integrated Services	100%
	Peter Murphy	Director for Children, Adults & Health	75%
	Annie Hunter	Policy & Practice Manager	25%
	Lucy Smith	Legal Services Manager	75%
	Alison Sykes	Interim Head of Vinney Green Secure Unit	75%
	Sarah Taylor	Safeguarding Board Business Manager	100%
	Robert Walsh	Head of Safer Stronger Communities	100%
	Steve Waters	Youth Offending Team Manager	75%
Avon Probation Service (CRC)	Marilyn Harrison	LDU Team Leader, BGSW CRC, Probation	25%
Avon Probation Services (NPS)	Jayde O'Brien	NPS Probation, Team Leader	50%
South Gloucestershire Clinical Commissioning Group	Lindsey Mackintosh	Designated Doctor Safeguarding Children	75%
	Jackie Mathers	Designated Nurse Safeguarding Children	75%
	Kate Mansfield	Named GP for Safeguarding Children	100%
	Anne Morris	Nurse Director, Head of Quality & Safeguarding	0%
Primary School	Tim Ruck	St. Stephen's Infant School	50%
Secondary School	Rhian Priest	Principal, Bristol Technology & Engineering Academy	0%
Lay Member	Karl Stephenson	Lay Member	25%
	Janice Suffolk	Lay Member	0%
Avon Fire & Rescue Service	Neil Liddington	Assistant Chief Fire Officer, Service Delivery	0%
CAFCASS	Victoria Penaliggon	Service Manager	25%
South Gloucestershire & Stroud College	Nick Herbert	Designated Safeguarding Lead	0%
Faith Sector	Adam Bond	Diocesan Safeguarding Advisor	100%
AWP	Jon Peyton	Head of Safeguarding Children	100%
South Western Ambulance Service NHS Foundation Trust	Simon Hester	Safeguarding Named Professional	25%
Deputy Representative North Bristol NHS Trust	Sue Jones	Head of Nursing & Governance in the Community Child Health Partnership	75%
University Hospitals Bristol	Carol Sawkins	Named Nurse Safeguarding Children	100%
HMP/YOI Eastwood Park	Suzanne Smith	Head of Safety & Equalities	0%
Survive	Sarah Telford	Chief Executive	100%
Barnardos	Duncan Stanway	Assistant Director	50%
Avon & Somerset Constabulary	Mark Evans	Chief Inspector	75%
Merlin Housing	Paul Coates	Director of Housing & Communities	0%
Sirona	Chrissie Hardman	Named Nurse for Safeguarding	100%
Soldiers, Sailors, Airman & Family's Association (SSAFA)	Julie Jones	Personal & Family Support Worker	0%
Sirona	Gareth Jones	Disabilities Champion	50%
Next Link	Carol Metters	CEO	25%

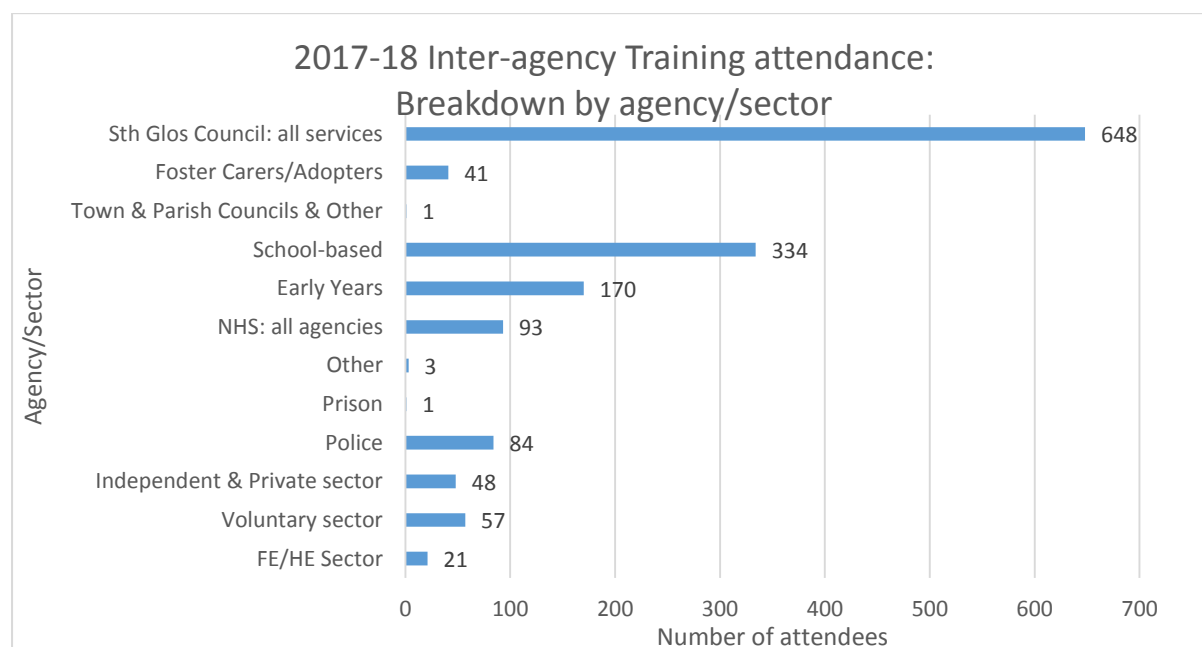
Appendices

Appendix Five: Financial Report

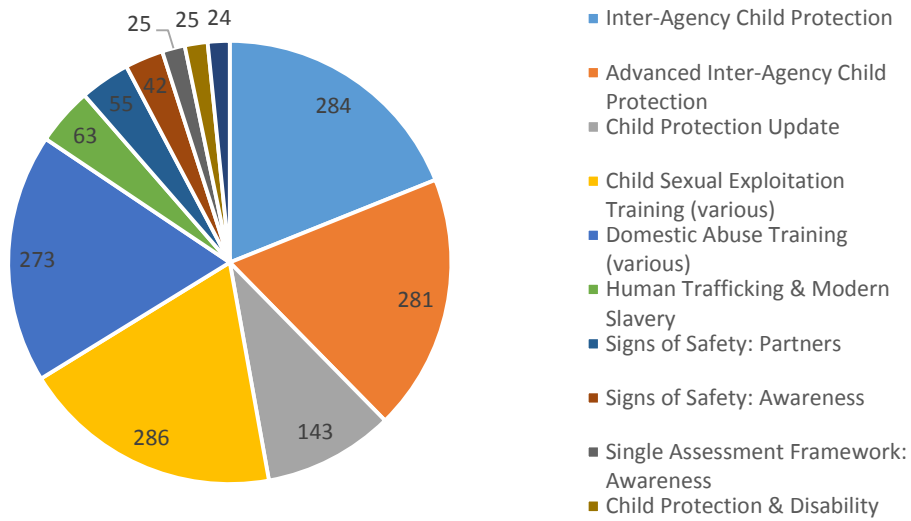
SOURCE OF FUNDS	
2017-2018 SAFEGUARDING CONTRIBUTION	CHILDREN'S KD802 CONTRIBUTION £
AVON & SOMERSET POLICE	£15,000.00
CLINICAL COMMISSIONING GROUP	£31,940.00
CAFCASS	£550.00
PROBATION	£500.00
YOUTH OFFENDING SERVICE	£4,940.00
AWP	£1,777.00
SOUTH GLOUCESTERSHIRE CAH DEPARTMENT	£85,970.00
TOTALS	£140,677.00
APPLICATION OFF FUNDS	
2017-2018 Outturn	EXPENDITURE £
PAY	
Children's Safeguarding Board Manager	£22,675.00
Safeguarding Policy and Practice Manager	£32,200.00
Independent Chair	£15,000.00
Administration	£27,596.00
TOTAL	£97,471.00
NON PAY	
Child Death Review	£5,500.00
Child Protection Procedures	£2,641.00
Conference	£4,340.00
Conference Contributions	-£2,049.00
Board Meeting Costs	£34.00
South West Grid for Learning	£11,540.00
Night Time Economy Community Training	£19,417.00
TOTAL	£41,423.00
TRAINING	
Child Protection Training	£50,897.40
Income from Training	-£52,340.00
TOTAL	-£1,442.60
OTHER	
CCG Reimbursement	£2,050.00
Employee Expenses, ICT and Other Costs	£1,175.60
TOTAL	£3,225.60
TOTALS	£140,677.00
Financial Outturn for Year	£0.00

Appendix Six: SGSCB Inter Agency Training Data

COURSE TITLE	ATTENDANCE 2017-18	Attendance 2016-17	Attendance 2015-16	Attendance 2014-15
Inter-Agency Child Protection	284	277	193	240
Advanced Inter-Agency Child Protection	281	303	238	189
Child Protection Update	143	131	94	114
Child Sexual Exploitation - all	286	101	116	59
Domestic Violence & Abuse Training - all	273	57	63	54
Single Assessment Framework - all	25	48	40	124
Child Protection & Disability	25	11	8	6
FGM Awareness	24	28	33	n/a
Signs of Safety: Partners	55	244	n/a	n/a
Signs of Safety: Awareness	42	277	n/a	n/a
Neglect Training (Toolkit)	0	38	19	72
Human Trafficking & Modern Slavery	63	61	0	0
"Mind Out" Mental Health Awareness	n/a	6	28	50
Parenting Capacity	0	0	21	33
Working with Difficult & Avoidant Families	0	0	11	31
Child Sexual Abuse	0	22	9	17
Forced Marriage/Honour-based Violence	0	28	9	8
Other/Various - shared etc.	0	13	25	29
TOTALS	1501	1645	907	1026



2017-18 Inter-agency Training: Attendance numbers by course



My awareness of Threshold Matrices will allow me to make more informed decisions about interventions should they be necessary

I gave a Staff training meeting to highlight the 7 golden rules of information sharing and gave them safeguarding scenarios to discuss in groups

I am able to use the tiers to be able to assess risk and to be able to decide when to refer to ART for advice

Appendix Seven: Practitioner Forum Survey

South Gloucestershire Safeguarding Children Board

Practitioner Forum Survey Report: Safeguarding Children Board

Background

The Practitioner Forum met in June 2017 and each member of the multi-agency group took three surveys back to their own organisations for completion by a range of practitioners. A total of 31 surveys were returned.

Three of the questions related to CSE, and aimed to check practitioner knowledge of, and understanding of the CSE Guidance and SERAF form.

Three of the questions related to the work of the Board, and aimed to check practitioner knowledge about the Board and inform the Board about practitioner views.

The last two questions in the survey asked about Safeguarding in general. These were 'What is Working Well in South Gloucestershire?' and 'What are you Worried About?'

Findings

CSE

Practitioners were asked if they had seen the new CSE Guidance. 42% of respondents said they had seen the guidance, 45% had not and 13% left this question blank.

Analysis of the data shows that those in Education settings were less likely than practitioners from other agencies to have seen the guidance document.

Practitioners were asked when they would complete a SERAF (Sexual Exploitation Risk Assessment Framework).

There were a range of free text responses, which gathered into themes indicate the following:

- When there are concerns about CSE (17 responses)
- Unsure (7 responses)
- As part of a Return Home Interview (2 responses)
- When concerned about a young person's relationship
- completing the SERAF not part of role
- When there are risks to a child

In total 64% of responses demonstrate an understanding that the SERAF should be completed when there are CSE concerns, however 22% either did not know what a SERAF is, or when to use it.

Finally practitioners were asked about where they would go to find a copy of the SERAF or the new Guidance.

Responses were again gathered into themes as follows:

- Safeguarding Board Website (11 responses)
- Own agency website (9 responses)
- Unsure/Not known (6 responses)
- Other responses – asking a colleague/asking ART/checking Government websites

65% of respondents demonstrated that they know where to find a copy of the guidance and the SERAF, there are some potential difficulties with each agency holding documents for practitioners to access, as it would be difficult to ensure all copies are the most up to date version.

19% of replies showed that the practitioner would not know where to look, and a further set of responses (9.5%) indicate that they would find the information after seeking advice.

The Work of the Board

Practitioners were asked what they know about the work of the Board.

There were a range of free text responses, which gathered into themes indicate the following:

- 29% of responses talked about creation and updating of safeguarding policies and procedures
- 35.5% did not know about the Board
- 26% referenced responsibility for Serious Case Reviews
- 16% of responses mentioned the Board website
- 13% mentioned provision of training



The second question asked practitioners what messages they thought the Board should know.

There were a range of responses, with no dominant theme. The most common response included practitioner concerns about Early Help. This focussed on the increased cuts to services and their ongoing ability to provide early intervention support services. In particular schools highlighted that pastoral roles are increasingly under threat and are

worried about the impact on their capacity to provide support to children and families in the future.

- 13% of responses reflected concerns about children missing education
- 17% mentioned that services are very stretched
- 13% of responses were concerns about thresholds being too high
- 17% praised the work of the FYPS (Family Young People Support) Team

Safeguarding in South Gloucestershire

The first question asked practitioners about what they believe is working well in safeguarding in South Gloucestershire.

23% of responses talked positively about good information sharing between professionals, and linked to this 23% of responses mentioned good multi-agency working between organisations.

Respondents spoke positively about using Signs of Safety and saw this as a strength in South Gloucestershire.

There were also a number of comments which praised particular teams or services as working well. Mentioned most often was ART (Access and Response Team), but survey responses also referred to School Nursing as working well, and the Virtual School Team.

Reference to the SGSCB Website and Multi Agency training also featured.



The second question asked about practitioners' worries about Safeguarding in South Gloucestershire.

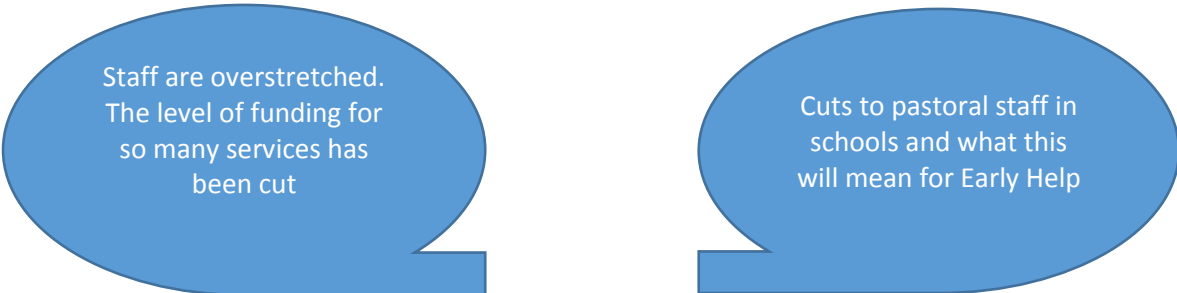
A number of responses can be gathered under the heading of Capacity. This includes comments about high caseloads, cuts to services and delays in information or access to services.

In total these amount to 39% of responses.

Several practitioners mentioned short notice being given for Child Protection Conferences.

There were comments about lack of young person friendly spaces to meet young people, and concerns about gaps in provision for particular groups of children.

Several survey responses mentioned thresholds being too high for services.



Staff are overstretched.
The level of funding for
so many services has
been cut

Cuts to pastoral staff in
schools and what this
will mean for Early Help

Recommendations

CSE

- All agencies link practitioners to SGSCB website, where the current documents will always be available, rather than holding pdf copies on internal intranet systems.
- Further information and promotion of CSE tools and guidance needs to be provided to Education settings.
- Set a timescale to repeat survey to check effectiveness of promotion

The Work of the Board

- Continue to promote the work of the Safeguarding board to practitioners. Check how messages are disseminated by Board members by using a member survey in Autumn 2017
- Continue to ask practitioners via the Practitioner Forum about the issues that concern them in their day to day work, and ensure the Board is a listening Board.
- Use the Board logo on Board related information, for example on training courses so that practitioners make the link between the Board and the events they attend
- Produce easy to understand and quick to digest guidance and tools
- Ensure the newsletter is distributed widely

Safeguarding in South Gloucestershire

- Provide feedback to teams that have been mentioned in the survey
- Acknowledge the difficulties practitioners face in the current climate
- Continue to listen to practitioners
- Give clear messages to practitioners about thresholds and child protection conference timescales to help manage expectations and increase understanding of processes

Sarah Taylor

Board Manager

October 2017

Appendices