



South
Gloucestershire
Children's
Partnership

COVID-19 Newsletter 1

SAFEGUARDING UPDATE FOR ALL PARTNERS

1ST APRIL 2020

Children's Services Update

This edition of the Covid-19 newsletter gives up to date information about changes to services available to date.

Further editions will follow, if you have information from your organisation that it would be useful to share with the partnership please send to sarah.taylor2@southglos.gov.uk

Jo Cross, Head of Integrated Children's Services at South Gloucestershire Council has prepared a briefing to all partners to provide information about how Children's Services are operating in South Gloucestershire with regard to children and young people.

The briefing is too large to fit within this newsletter and is being sent alongside this newsletter as an attachment.



Next Link Domestic Abuse Service

This is just a reminder that Next Link the specialist service for domestic abuse is still operating during the COVID 19 period. This time of self-isolation can be particularly hard on women who cannot get out of the house in their usual ways. Due to COVID-19 Next Link, Safe Link and Missing Link will be keeping external visits, meetings and interventions to essential ones only.

We are however, still open and operational. We will be providing service users with the support required over the phone when possible and will continue to liaise with other organisations in managing the risks to victims and their children.

Avon and Somerset Family Law are also not conducting any face to face meetings so they will be available on phone.

Please let clients know that they can call Avon & Somerset Family Law every other Tuesday between 9am-12pm on the numbers below for the advice they would usually seek at the SG drop in.

Only between 9am-12pm

31st March Micha Lilley is: 07535610230

Next link Continued...

14th April Emma Wildblood: 07393 231210

28th April Zina Ruffino: 07767 102 390.

12th May Emma Wildblood: 07393 231210

26th May Zina Ruffino: 07767 102 390.

If service users require support from Next Link; please advise them to contact us on our duty helpline number which is 01179250680

Office hours are 10-4pm and the out of office hours protocol is still operating- call the number and leave a message, then contact the police and they will contact Next Link the following day.

The telephone line is running 10-4pm Monday to Friday 0800 4700 280. There is a Live Chat [here](#)



Counselling Services

Face-to-face therapy is currently suspended, all adults and young people with appointments have been contacted. The waiting list is currently closed and no new referrals are currently being accepted.

Check the [website](#) which will be regularly updated when there is further news.



Sexual Assault Referral Centre – Update due to Covid 19



For Adult cases we will supply all self-swabbing guide material from the SARC for each case.

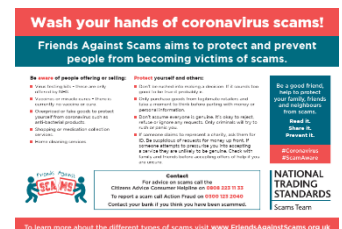
For Paediatric cases we will continue to provide a face to face service throughout Wiltshire/Gloucestershire and Avon and Somerset for those age 15 and under at the Bridge in the majority of cases with a degree of telephone consultation beforehand and additional precautions on site if they are symptomatic or isolating at home. For more details of the emergency plan click [here](#)

Website for The Bridge is [here](#)

National Trading Standards SCAMs team



Friends against SCAMs have produced some information about SCAMs particularly related to Coronavirus that practitioners may find helpful. They have developed a postcard that you can download from their website and further information is available [here](#)



Disclosure and Barring Service



Disclosure &
Barring Service

The following guidance has been issued by the Disclosure and Barring Service (25th March)

[Guidance](#)

[Safeguarding Factsheet: Community volunteers during COVID-19 outbreak](#)

Barnardo's BASE Project

Update on how the BASE service is continuing to support vulnerable young people during this time:

- All staff are now working remotely in order to comply with social distancing guidelines
- Some staff have needed to self-isolate and/or are juggling child care arrangements
- Our project in Old Market is now closed and our health clinics have been cancelled
- Workers are contacting the children/young people on their caseloads and their professional network regularly (individualised plans in place dependent on need/risk).
- Workers are delivering key messages around the importance of social distancing, online safety, emotional regulation etc
- Workers, alongside their line manager, are assessing whether there is enough concern/urgency to provide face-to-face contact. If there is critical need the BASE team will endeavour to respond to this and will update the network, make necessary safeguarding referrals etc
- Referral enquiries are still encouraged and as much support as possible will be offered. Enquiries can be made through calling 0117 9349726 which has been diverted.



Health Visiting in South Gloucestershire

Health visitors will provide:

- Antenatal: telephone not face to face
- NBV: telephone contact, if a health visitor feels a face to face contact is required each situation will be risk assessed by the Health Visitor lead team. There will be a small number of face to face visits provided when needed.
- Health Visitor operated information/advice telephone line for all families, under 5 and antenatal women. Monday – Friday 9am-5pm.

Talking to a Child who is worried about Coronavirus

The NSPCC has created a new webpage with information and advice for parents or carers who are worried a child or young person may be struggling with their mental health or has anxiety about Coronavirus. The webpage includes information on: talking about feelings and worries; keeping in touch and balancing screen time; ways to create structure and routine; and helping to give children a sense of control.

Read the information and advice: [Talking to a child worried about coronavirus \(COVID-19\)](#)