

South Gloucestershire Safeguarding Children Board

Signs of Safety

Briefing note 2 for partner organisations and practitioners

August 2016

Welcome.

Welcome to the second SofS briefing note for partners. By now hopefully you will all have heard of SofS and possibly seen it in action in a Child Protection conference or Child in Need meeting, or even used some of the tools yourself.

There has also been a range of training and awareness raising sessions for you over many dates and these continue to be available.

Please see the flier at the end of this briefing. You can establish what is the right training for you and book on via the [South Gloucestershire Learning and Development website](https://learning.southglos.gov.uk/cpd/portal.asp?ccid=11): <https://learning.southglos.gov.uk/cpd/portal.asp?ccid=11>

Who has been trained so far?

So far 92 employees from partner organisations have attended the 1 day Signs of Safety Partners Course, with a further 34 booked on to upcoming courses. Over half of these are school staff.

37 people have attended the 3 hour Signs of safety Awareness Briefing, with a further 17 booked on to the course in the coming months.

There are places still available on both courses on all dates so get booking!

Partner feedback from training and putting the model into practice

'My role and remit does not require me to work face to face with clients but it is important that I understand the Signs of Safety approach being taken in South Gloucestershire. I therefore attended the 3 hour briefing which fulfilled this need. The length of the session was about right and provided a good balance of information with enough opportunities to try out the approach. Also it was useful to hear how signs of safety will be applied in various settings.'

Public Health Programme Lead

'The concept is great and useful and the trainer is very skilled. However, I found the two day course to be quite slow and felt that it could have been condensed to a day. Being familiar with solution focused approach may be the factor making me feel this. It felt that the practical activities done on the second day could have been done on day one.'

Drugs and Alcohol Specialist

"Having used the signs of safety model I have found the framework easy to understand, use and write reports utilising the model. It allows for the positives and negatives to be analysed and in conjunction with partner agencies gives a clear and concise picture of what is going on in the child or childrens lives. It focuses on the 'voice of the child' and allows the practitioner to fully understand the lived experience of the child. Additionally it allows scope into the parenting capacity or ability, again in a way that gives insight into the lived experiences of the child. The scaling of the concerns adds a further element on analysis when considering the safety of the child but also as to the level of intervention required from professionals whether that be section 47, section 17 or no involvement.

The tool has allowed me as a practitioner to develop my skills within conference to feel more confident in my ability to represent the child more fully whilst also understanding and clearly seeing both positives and negatives in a visual way."

Health Visitor

'I attended the signs of safety training and was very impressed with the new approach to finding out information about the families with whom we are working and who are sometimes subject to some pretty intrusive queries.

I liked the way that it is strength based and not solely focussed on what needs to be worked upon. I also liked the structured way in which the person completing it has a set of questions and a format from which to work. On the actual training day, it was useful for us to do a review of a 'live' case from the workers attending the training as it showed how easily someone who did not know the case was able to pick up the issues and offer a way to resolve them .

I recently attended a child in need meeting where the social worker chairing the meeting used the process to judge what the family needed and it was useful for the family to see the positives at the start of the meeting and I think it garnered much more information from them as they felt more relaxed about the process as it wasn't just a worker 'finger wagging' at them about what was going wrong. It was also useful for the workers to explain the reasoning behind their scaling points and the family could understand much more about the points that workers were worried about. I also believe that the outcomes are much better defined in the signs of safety process and everyone is clearer on what they need to work on.

Specialist Health Improvement Practitioner

Signs of Safety page on the SGSCB website

We have developed a new page of the Safeguarding Children Board website dedicated to SofS. Here you will find these partner briefings, all the assessment tools and the policy statement about SofS.

<http://sites.southglos.gov.uk/safeguarding/children/i-am-a-professional/signs-of-safety/>

The screenshot shows a web browser window displaying the South Gloucestershire Safeguarding Children Board website. The page title is "Signs of Safety | South Gl: X". The URL in the address bar is "sites.southglos.gov.uk/safeguarding/children/i-am-a-professional/signs-of-safety/". The website header features the board's name, a search bar, and navigation links for Accessibility, Privacy, Listen/Translate, and Sitemap. A main navigation bar includes "Adults", "Children", "Library", "News", and "Report a concern". Below this, there are links for "I am a child/young person", "I am a parent/carer", "I am a professional", "Information for the public", and "Safeguarding children board". The breadcrumb trail is "Home > Children > I am a professional > Signs of Safety".

Signs of Safety

The illustrations show a fairy on the left with a crown and wings, and a wizard on the right with a pointed hat and a cape. Both characters are holding a star or a cloud.

The implementation of Signs of Safety is fully supported by the South Gloucestershire Safeguarding Children Board. In December 2015 members of the board attended a development morning where they received a briefing about the Signs of Safety model. They then undertook an exercise where they identified what their organisations and practitioners will need to assist children's social care in implementing Signs of Safety, in order to work in a joined up and multi-agency way.

Policy Statement

South Gloucestershire is committed to implementing the Signs of Safety approach as our core, multi-agency approach to working with families and managing risk where children are in need.

Downloads

- [Assessment and Planning Form SofS](#)
- [Fairy - with guide](#)
- [Fairy - without guide](#)
- [Wizard - with guide](#)
- [Wizard - without guide](#)
- [Rules of the Safety House - with guide](#)
- [Rules of the Safety House - without guide](#)
- [The Three Houses](#)

Concerned about a child?

01454 866000 - Monday to Friday

Updated leaflets - Signs of Safety and Child Protection Conferences

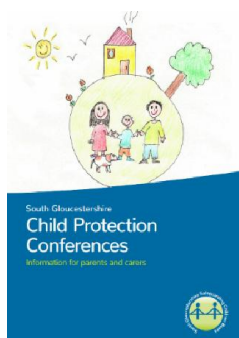
We have updated the following three leaflets to reflect using the Signs of Safety model in Child Protection Conferences:

<http://sites.southglos.gov.uk/safeguarding/children/i-am-a-professional/child-protection-conference/>

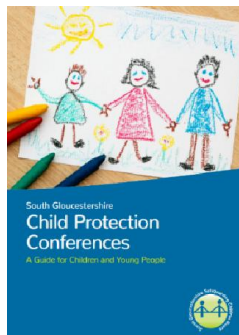
Child Protection Conference: Information for professionals



Child Protection Conference: Information for parents and carers



Child Protection Conference: Information for Children and Young People



We are also now working on the minutes of the conference and reports to conference which should be updated soon.

Contact

If you have any queries regarding the implementation of the Signs of Safety approach please contact your organisations Safeguarding Children Board representative for more information. Alternatively you can contact Catherine Boyce

Catherine.boyce@southglos.gov.uk

SOUTH GLOUCESTERSHIRE SIGNS OF SAFETY TRAINING: SEPT 2016 – MARCH 2017

A number of different types of training are available. The Training Matrix gives guidance on who should attend each version. All courses take place at Kingswood Civic Centre unless otherwise stated on the course information or council's learning & development website.

2-Day: INTRODUCTION TO SIGNS OF SAFETY

*** 2 - 3 NOVEMBER 2016 * 9 - 10 MARCH 2017**

The most detailed course – aimed mainly at children's services staff in the council; appropriate only for someone who will be the "Signs of Safety champion" in an organisation external to the council.

1-Day: SIGNS OF SAFETY: PARTNERS

*** 21 SEPTEMBER * 3 OCTOBER * 18 OCTOBER**

A condensed version of the above course - still offering the opportunity to properly explore and practice the model. **Ideal for the Safeguarding Lead within a single setting, team or organisation:** employees actively involved in assessments, CP Conferences, Children in Need meetings, such as Designated CP Leads in Schools, relevant operational managers or practitioners in Early Years settings, Health and the voluntary sector.

Following the course those practitioners will want to think about how they then ensure others in their work-setting get a basic awareness of Signs of Safety, for example via a short internal cascade meeting for key staff etc.

3-Hour SIGNS OF SAFETY AWARENESS BRIEFING

*** 22 SEPT (a.m.) * 22 SEPT (p.m.) * 17 OCT (a.m.) * 17 OCT (p.m.)**

A presentation-style overview, giving participants a basic introduction to the principles behind the Signs of Safety approach. Designed for staff who won't be using it directly with families and who only need to a general awareness.

HOW TO BOOK ON ANY OF THE ABOVE COURSES:

Bookings must be made by using the council's self-serve learning & development website here: <https://learning.southglos.gov.uk/cpd/portal.asp>. There is no charge to LSCB partner agencies for places on these sessions. The usual "penalty" fee will be charged if a delegate "no shows" on the day though (see the *Course Charges* section of the above website). If you have accessed council-run training since May 2015 you will already have a User Account and Password. If you have not, you can set one up by going to "First Time Here?" from the Home page. Once you have created your new account, phone South Glos Council's Workforce Development team on 01454 868963 (or email hrworkforcedevelopment@southglos.gov.uk) and the team can fully authorise your new account and you can then book on council-run courses.