

## 7.2.8 Early Help Arrangements and Preventive Services

The [Early help vision and strategy 2019-2024 | South Gloucestershire \(southglos.gov.uk\)](https://southglos.gov.uk) describes the partnership vision, priorities, and framework for early help. More information here:

### We are in this together

Our strategy is based on evidence about what effective ‘early help systems’ need to have in place.

This includes strong community networks, active engagement of families themselves, access to information and support as early as possible and a range of additional targeted or more specialist support working closely alongside universal settings and services.

### What’s new

We’ve made some changes to our preventative services:

- Compass (previously known as the Early Help Partnership Team)
- Families Plus 0-5 (previously known as Children’s Centre teams)
- Families Plus 5-18 (previously known as FYPS)
- Young People’s Support (YPS) team (new)
- Youth Offending Team (YOT) (unchanged)

These are targeted teams providing short to medium length interventions for families where there is evidence that universal services have not been able to meet their needs (excluding YOT which has statutory functions). The teams include trained, skilled staff who have a strengths-based ‘whole family’ and relationship-based approach. Practice is trauma-informed with understanding of the wider economic and social determinants that can impact on children and families being able to thrive. The work includes both one to one work with individual families and group work such as parenting programmes. The aim is to empower families and provide opportunities for them to build skills and resilience, with a focus on positive outcomes that are sustainable and will support families into the future.

### Compass

*Navigating to the right help, at the right time, in the right way.*

## **The South Glos Way: A SEND and inclusion toolkit for South Gloucestershire education settings and professionals**

Compass supports the delivery of the Early Help Partnership Strategy. It will act as the 'engine room' for early help to support building capacity and confidence across the children's workforce and to help families address any issues as early as possible. We do this by:

- Providing coordination, training and advice regarding early help including the Early Help Assessment and Plan (previously known as SAFeh), Team Around the Child/Young Person/Family and Lead professional approach.
- Helping families navigate to the right information, advice, and guidance, at the right time and as early as possible when problems emerge.

If it is not a safeguarding issue, but you are worried about a family and don't know what action to take, or you have any other queries relating to supporting families, contact the Compass team by emailing [Compass@southglos.gov.uk](mailto:Compass@southglos.gov.uk).

If you wish to talk about a family in detail, please ensure you have the consent from the family. If it is a general enquiry without the need to share family details (e.g. signposting for community resources) then consent is not required. Each school and early years setting has a named Compass link worker who will respond as quickly as possible.

For referrals for families who have more complex needs (but not safeguarding) these should come through ART using the 'request for help' form and email to [AccessandResponse@southglos.gov.uk](mailto:AccessandResponse@southglos.gov.uk) or calling ART on 01454 86600. The referral will then be directed to the most appropriate level of support via Compass.

### **Families Plus 0-5**

*Teams based in each of the six children's centres across South Gloucestershire.*

Children's centre buildings will be developed further to deliver a wider range of community-based programmes and opportunities for families of young children.

The Families Plus 0-5 is a targeted service for families with children from pre-birth to 5 years old who are experiencing multiple or complex issues such as poor housing, unemployment, mental or physical health issues and family conflict. Their work is strengths-based, with families enabled to actively engage in the work alongside close partnership working with other settings and services.

### **Families Plus 5-18**

*North Teams based on Patchway, South Teams in Kingswood.*

Families Plus 5-18 is a targeted service for families with children from 5-18 who are experiencing multiple or complex issues such as poor housing, unemployment, mental or physical health issues, family conflict, poor school attendance and exclusion.

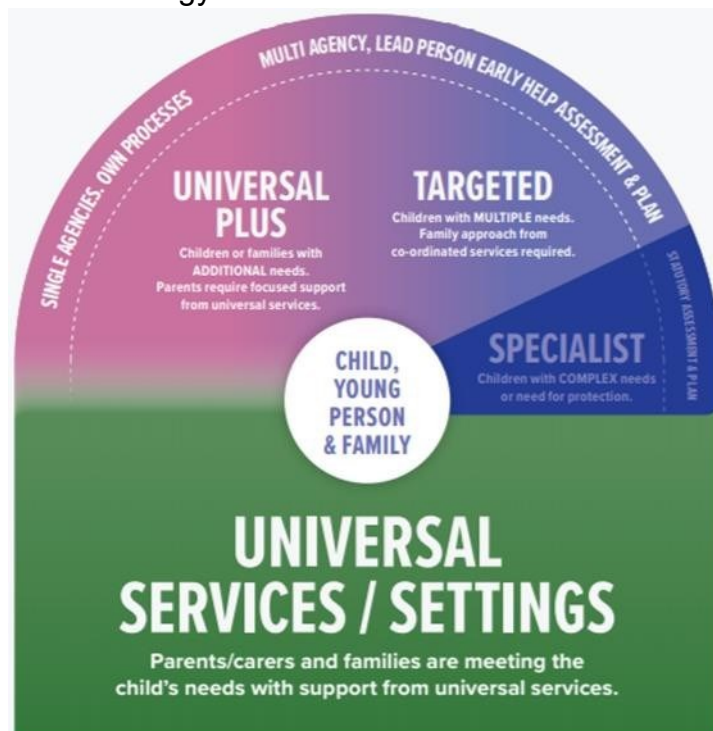
## The South Glos Way: A SEND and inclusion toolkit for South Gloucestershire education settings and professionals

### Young People's Support (YPS) Team

Offer a distinctive adolescent centred preventative service for young people who face worrying risks to their safety and well-being. These are young people where there are multiple risk factors and who might benefit from short term (6 weeks to 6 months) intensive work including their family to prevent further escalation of concerns/ needs, to help restore family relationships and promote adolescent resilience.

## When do Preventative Services work with families?

Preventative Services are targeted, with some specialist functions (notably the statutory work of the Youth Offending Team and tracking education, employment, and training destinations of young people). The key aspects of targeted work are indicated in this graphic from the strategy:



Preventative Services teams may become involved with families at different stages. For example:

- Compass provide advice and support to services who are working with families and/or who are leading on an Early Help Assessment and Plan (EHAP)
- Compass provide advice and signposting directly to families

## **The South Glos Way: A SEND and inclusion toolkit for South Gloucestershire education settings and professionals**

- Families Plus (0-5 and 5-18) and Young People's Support (YPS) work alongside other agencies and/or directly with families whose needs are more complex
- Families 'stepped down' from statutory services are supported to sustain positive changes
- YOT supports young people to reduce the risk of offending or re-offending
- Parenting programmes are run for proactive, preventative support.

## **Requesting support from Preventative services (other than YOT)**

A 'Request for Help' form can be completed by a family or, with the family's consent, by a professional or other person on their behalf and sent to [accessandresponse@southglos.gov.uk](mailto:accessandresponse@southglos.gov.uk).

If there are no significant safeguarding concerns the Compass team will explore how to link the family to the most appropriate level of support. This could be by directly providing advice, through the wider early help partnership or Preventative Services.

Referrals should explain what the unmet need is for the child/young person and show what has already been put in place to address this. If this has not been successful, some insight into why that is the case would support the referral.

Remember if you are unsure about making a referral you can contact the Compass team via email and speak to one of the Compass Partnership Workers. Email: [EarlyHelpSupportTeam@southglos.gov.uk](mailto:EarlyHelpSupportTeam@southglos.gov.uk).

## **Resources for children and families**

We have a new online source of information, advice and guidance for people living in South Gloucestershire which is continuing to be populated with information.

Find it [here](#).