



## 1.3 National and local context

In South Gloucestershire there are:

- 94 primary maintained schools and academies
- 15 secondary maintained schools and academies
- 1 University Technical College (UTC) and one Studio School
- 5 Special Schools which provide for a range of needs
- 7 resource bases within primary and secondary schools
- 2 access centres
- 1 EOTAS (Education other than at school - Pathways Learning Centre)
- 1 Secure Unit
- 1 Free school which specialises in ASC (4-19 yrs)

## Department for Education National Headlines for SEND

### Headline facts and figures for 2019-20

- 3.3% of all pupils in schools in England have an Education, health and care (EHC) plan, a rise from 3.1% in 2019
- A further 12.1% of all pupils have SEN support, without an EHC plan, up from 11.9% in 2019.
- The most common type of need for pupils with an EHC plan is autistic spectrum disorders and for pupils with SEN support is speech, communication and language needs
- SEN is more prevalent in boys than girls, with boys representing 73.1% of all pupils with an EHC plan and 64.6% of pupils with SEN support.

## The number and percentage of pupils with EHC plans and on SEN support has risen

Across all schools, the number of pupils with an EHC plan has increased by 8.7%, from 271,200 to 294,800 in January 2020. This represents 3.3% of all pupils, an increase from 3.1% last year. This continues the trend of increases seen from 2018, after remaining steady at 2.8% of the total pupil population from 2007 to 2017.

The number of pupils with SEN support has also increased, by 3.0% to 1,079,000 in January 2020. This represents 12.1% of all pupils, an increase from 11.9% in 2019.

This gives a total of 1,373,800 pupils with SEN, or 15.5% of all pupils. This has increased from 14.9% in 2019.

## The number of pupils with SEN has increased across all school types

### Specifically:

- 1.8% of pupils in state-funded primary schools have an EHC plan in January 2020, compared to 1.6% in 2019, while 12.8% have SEN support, up from 12.6% last year. Overall, pupils in primary schools make up 49.9% of all SEN pupils, down from 50.8% in 2019.
- The same percentage, 1.8%, of pupils in state-funded secondary schools have an EHC plan in January 2020, an increase from 1.7% in 2019. 11.1% of pupils have SEN support, an increase from 10.8% in 2019. Overall, pupils in secondary schools with SEN account for 32.0% of all pupils with SEN, up from 31.4% in 2019.
- There has been a large increase in the percentage of pupils in pupil referral units with an EHC plan, up from 13.4% to 16.4%. There has been an increase in the number of pupils with an EHC plan also, while the overall pupil population in pupil referral units has decreased. Conversely, there has been a decrease in those with SEN support in pupil referral units, from 67.6% to 64.9%. This includes pupil referral units, academy and free school alternative provisions.

## Local Context – The Voice of Children and Young People with SEND

### South Gloucestershire SEN summary from 2019 Online Pupil Survey (OPS)

Respondent numbers (self-reported)

## The South Glos Way: A SEND and inclusion toolkit for South Gloucestershire education settings and professionals

	Secondary (years 8,10)	Primary (years 4,5,6)
Do you have Special Educational Needs or an educational health plan?	247 out of 3104 (8%)	348 out of 4437 (7.8%)

	Secondary (years 8,10)		Primary (years 4,5,6)	
	SEN	NO SEN	SEN	NO SEN
Are you a boy or a girl?	GIRL: 43% (n: 105)	GIRL: 49.8% (n: 1420)	GIRL: 36% (n: 125)	GIRL: 50.7% (n: 2070)
	BOY: 57% (n: 139)	BOY: 50.2% (n: 1429)	BOY: 64% (n: 222)	BOY: 49.3% (n: 2010)

## SUMMARY from the Online Pupil Survey for CYP with SEND

### Stress indicators

- SEN pupils take longer to get to sleep than non-SEN pupils.
- A higher percentage of SEN pupils report being stressed by schoolwork and worrying about going to school than non-SEN pupils in both Primary and Secondary phases.
- SEN pupils report not able to get to sleep at night because of worrying about something more often than non-SEN pupils.

### Mental Health

- A higher percentage of SEN pupils report having self-harmed and/or taken an overdose than non-SEN pupils.
- A much higher percentage of SEN pupils have used the services of CAMHS.
- SEN pupils are less satisfied, less confident and less proud of their achievements when compared to non-SEN pupils.

## The South Glos Way: A SEND and inclusion toolkit for South Gloucestershire education settings and professionals

### Safety

- SEN pupils feel less safe at school and from crime. They are more likely to have been in trouble with the police and to have experienced or witnessed domestic abuse.
- SEN pupils report a higher percentage of bullying than non-SEN pupils.

### School Experience and learning support

- Although some aspects of school life, such as enjoyment and learning are comparable with non-SEN pupils in Primary phase, by Secondary all experiences except lesson disruption are less positive for SEN pupils.
- SEN pupils are more likely to miss school and be excluded from school.
- Both Primary and Secondary SEN pupils report less help and support for learning from the people they live with. Secondary SEN pupils also report less help and support for learning within their school compared to non-SEN pupils.
- Although there is no difference in knowledge about Further Education training, SEN pupils report that they would be less likely to go on to higher education than non-SEN pupils.

## South Gloucestershire Overview of SEND Primary and Secondary mainstream (Spring 2020 Census)

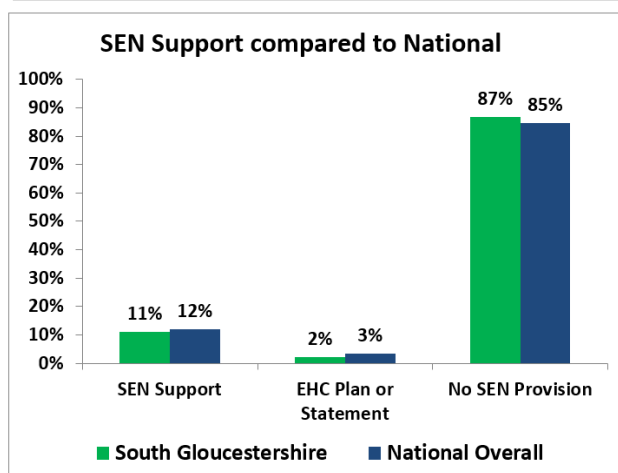
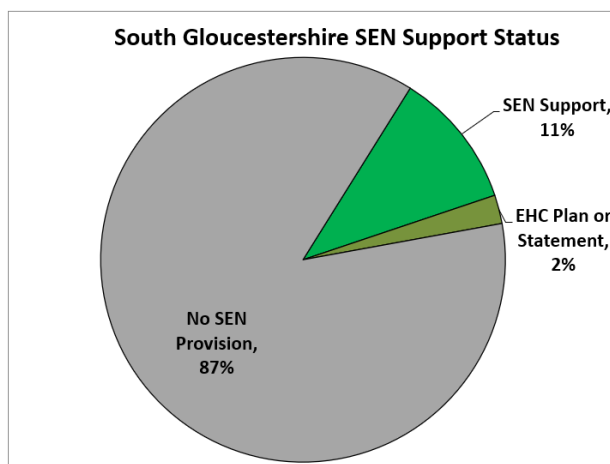
These charts provide an overview of South Gloucestershire **Primary and Secondary mainstream SEN statistics (including schools with resource bases)**, compared to national mainstream primary and secondary statistics (including schools with resource bases). For the purpose of this analysis, the tables below showing national averages, do not include special schools, nurseries/pre-schools or post 16 settings.

	BREAKDOWN OF SEN at SOUTH GLOUCESTERSHIRE COUNCIL COMPARED TO NATIONAL								
	Total number of pupils on roll	Total number and percent with SEN Support (without		Total number and percent of pupils with an Education, Health		Total number and percent with SEN		No SEN	
<b>SOUTH GLOUCESTERSHIRE COUNCIL PRIMARY</b>	23258	2586	11.1%	533	2.3%	3119	13.4%	20139	86.6%
<b>National (Primary)</b>	4,714,772	602,616	12.8%	83,438	1.8%	686,054	14.6%	4,028,718	85.4%
<b>SOUTH GLOUCESTERSHIRE COUNCIL SECONDARY</b>	15907	1703	10.7%	363	2.3%	2066	13.0%	13841	87.0%
<b>National (Secondary)</b>	3,409,277	379,193	11.1%	60,229	1.8%	439,422	12.9%	2,969,855	87.1%
<b>GLOUCESTERSHIRE COUNCIL (Primary &amp; Secondary combined)</b>	39165	4289	11.0%	896	2.3%	5185	13.2%	33980	86.8%
<b>NATIONAL (Primary &amp; Secondary combined)</b>	8,124,049	981,809	12.1%	143,667	1.8%	1,125,476	13.9%	6,998,573	86.1%

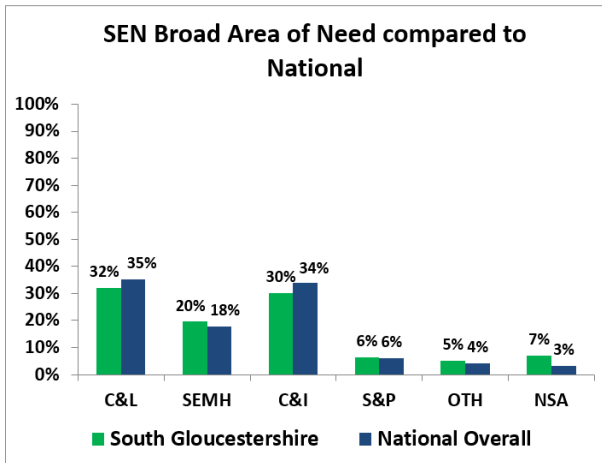
# The South Glos Way: A SEND and inclusion toolkit for South Gloucestershire education settings and professionals

BREAKDOWN BY BROAD AREA OF NEED at SOUTH GLOUCESTERSHIRE COUNCIL COMPARED TO NATIONAL									
	Total number and percent with SEN for SOUTH GLOUCESTERSHIRE COUNCIL PRIMARY		Spring 2020 National Primary	Total number and percent with SEN for SOUTH GLOUCESTERSHIRE COUNCIL SECONDARY		Spring 2020 National Secondary	Total number and percent with SEN for SOUTH GLOUCESTERSHIRE COUNCIL		Spring 2020 National (Primary & Secondary combined)
	Cognition and Learning Needs	878	28.2%	29.8%	778	37.7%	41.4%	1656	31.9%
Social, Emotional and Mental Health Needs	574	18.4%	16.8%	438	21.2%	20.7%	1012	19.5%	18.3%
Communication and Interaction Needs	1082	34.7%	39.9%	479	23.2%	22.7%	1561	30.1%	33.2%
Sensory and/or Physical Needs	182	5.8%	5.7%	152	7.4%	6.8%	334	6.4%	6.1%
Other Difficulty/Disability	149	4.8%	3.7%	109	5.3%	5.7%	258	5.0%	4.5%
SEN support but no specialist assessment of type of need	254	8.1%	4.1%	110	5.3%	2.7%	364	7.0%	3.5%

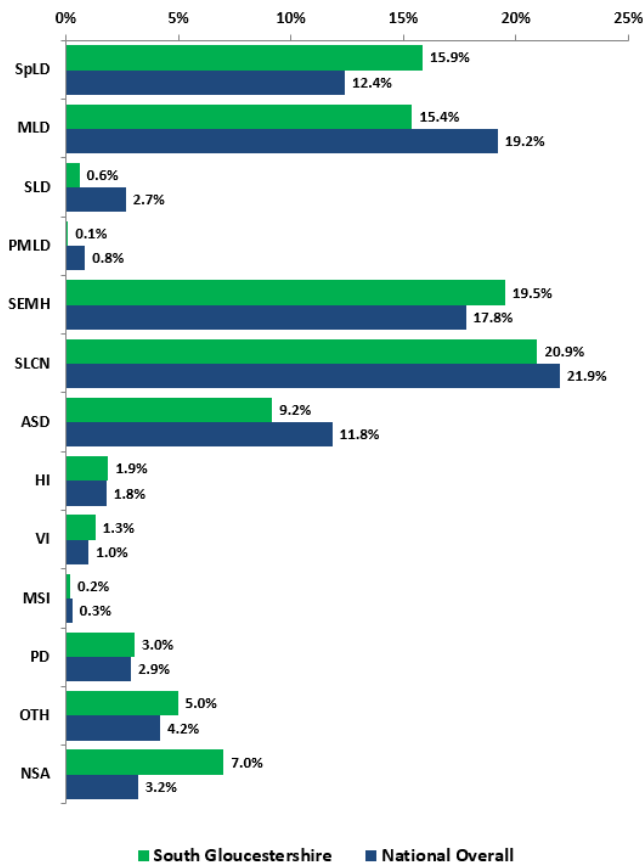
BREAKDOWN BY PRIMARY TYPE OF NEED at SOUTH GLOUCESTERSHIRE COUNCIL COMPARED TO NATIONAL									
	Total number and percent for SOUTH GLOUCESTERSHIRE COUNCIL PRIMARY		Spring 2020 National Primary	Total number and percent for SOUTH GLOUCESTERSHIRE COUNCIL SECONDARY		Spring 2020 National Secondary	Total number and percent for SOUTH GLOUCESTERSHIRE COUNCIL		Spring 2020 National (Primary & Secondary combined)
	SpLD	391	12.5%	9.5%	431	20.9%	20.0%	822	15.9%
MLD	454	14.6%	19.5%	344	16.7%	20.8%	798	15.4%	20.0%
SLD	28	0.9%	0.6%	3	0.1%	0.5%	31	0.6%	0.5%
PMLD	5	0.2%	0.3%	0	0.0%	0.1%	5	0.1%	0.2%
SEMH	574	18.4%	16.8%	438	21.2%	20.7%	1012	19.5%	18.3%
SLCN	845	27.1%	31.2%	241	11.7%	11.7%	1086	20.9%	23.5%
ASD	237	7.6%	8.7%	238	11.5%	11.1%	475	9.2%	9.6%
HI	52	1.7%	1.7%	46	2.2%	2.2%	98	1.9%	1.9%
VI	36	1.2%	0.9%	32	1.5%	1.3%	68	1.3%	1.1%
MSI	8	0.3%	0.3%	2	0.1%	0.2%	10	0.2%	0.3%
PD	86	2.8%	2.8%	72	3.5%	3.0%	158	3.0%	2.9%
OTH	149	4.8%	3.7%	109	5.3%	5.7%	258	5.0%	4.5%
NSA	254	8.1%	4.1%	110	5.3%	2.7%	364	7.0%	3.5%



# The South Glos Way: A SEND and inclusion toolkit for South Gloucestershire education settings and professionals



**Comparison of Primary Type of Need to National**



## Synthesis of data - Comparison to national mainstream primary and secondary statistics

- In mainstream primary and secondary schools (when comparing to primary and secondary mainstream national figures), the percentage of pupils who are

## The South Glos Way: A SEND and inclusion toolkit for South Gloucestershire education settings and professionals

SEN support or have an EHCP is 1% higher in both categories, than the national average.

- Cognition and Learning and Communication and Interaction are the highest figures in South Gloucestershire, when considering pupils broad areas of SEN need, however these figures are lower than the national average in mainstream primary and secondary contexts. South Gloucestershire SEMH figure is 2% higher than the national average.
- Primary area of needs analysis shows that Specific Learning Difficulties (SpLD) and SEMH are higher than the national average.
- Whilst Speech, Language and Communication (SLCN) is lower than the national average, it is still identified as a high percentage for pupils in South Gloucestershire at 20.9%.

## How we are responding?

- The work of the SEND clusters is pivotal in meeting the needs of pupils identified by this data set (see section 1.13 and 4.3). The clusters overarching objectives are:
  - Better educational outcomes for children identified at SEN Support
  - Earlier identification of need at SEN Support so that there is a reduction in requests for Education Health Care plans
  - Meeting the needs of pupils with behaviour that challenges in schools and reducing the number of exclusions.
- The Local Authority and SEND clusters are working in partnership to develop high quality Alternative Provision with an AP Hub approach within mainstream primary and secondary schools, enabling pupils with specific SEMH needs to access local support within their community and remain at their school.
- The South Glos Way toolkit roll out from September 2020 includes a comprehensive package of training for Heads, SENCOs and school staff to ensure a consistent, high quality approach to supporting pupils with SEND across our local area. There will also be briefings and updates for governors, parents & carers, health, social care and early help colleagues.
- The Local Authority and SEND clusters are working closely with South Glos Parent Carer forum representatives and Supportive Parents representatives to shape the work of the **#SouthGlosConnect** 'recovery curriculum' approach and outcomes from this work will feed into the toolkit to ensure it reflects the needs of SEND pupils post pandemic.